

# THE CZECHOSLOVAK SPECIALIST

Official Monthly Journal of the  Society for Czechoslovak Philately  
Silver Bronze Award Praga 1968

Vol. XXXV

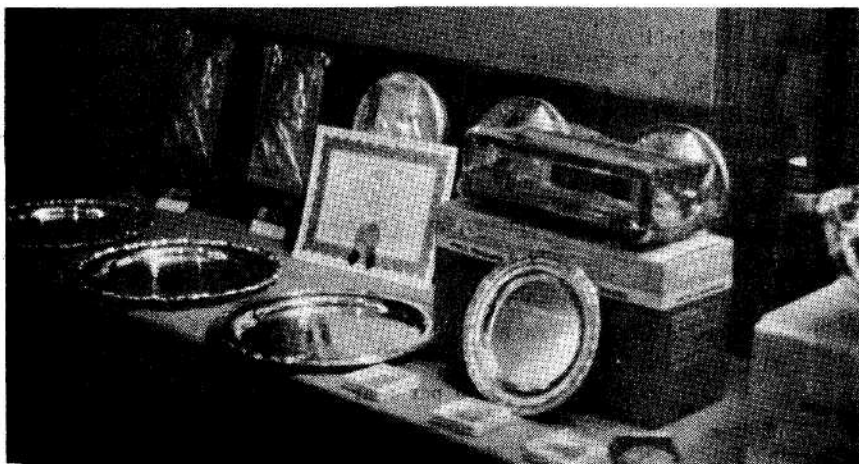
November 1973

No. 9, Whole No. 335

## NAPEX '73 THROUGH THE REAR VIEW MIRROR



NAPEX '73 is now well behind us—but for the record (and posterity) let us record that if it wasn't the best showing of our hobby at any National show in the U. S., it certainly had the most "firsts" and possibly even one "last." The "firsts" include participation by ARTIA by way of presentation of a Special Award (crystal vase) to the SCP Grand Award winner. Another "first" may have been the flood of exhibit entries, necessitating refusal of many for lack of exhibition space. The "last" may possibly be participation of our SOCIETY in NAPEX due to a number of unfortunate instances of mis-



NAPEX '73 Awards—SOCIETY plaques in background

management by the NAPEX organizing committee, detailed later in our report.

In summary, our SOCIETY was among the most active participants in NAPEX, both in terms of the number of exhibitors, the number of exhibits, and the number of awards. Other Societies participating included the American Air Mail Society, the United Postal Stationery Society, The China Stamp Society, the Korea Stamp Society, the George Washington Masonic Stamp Club, and the Postal History Society.

The NAPEX Banquet which took place on Saturday evening, Sept. 15th, was well attended by members of our Society. The evening's highlight, the presentation of awards, was made by Clyde Jennings, Jr., Chairman of the Judges. The following table lists recipients of awards who are members of our SOCIETY:

Name	NAPEX 73 Awards	S. C. P. Award	Other Awards
Henry Hahn	Gold	Grand Award	ARTIA Crystal Vase
Henry Stollnitz*	Silver		
George T. Turner*	Silver		P. H. Silver**
William Sandrik*	Silver		P. H. Bronze**, Stationery
Otakar Kutvirt	Silver	LOWEY MEMORIAL	
C. J. Pearce	Silver	Gold Award	
Alec McMillan	Bronze	Silver Award	
Richard Green	Bronze	Bronze Award	
L. V. Fischmeister	Bronze		
Charles Chesloe	Bronze		
George A. Blizil	Bronze		
Joseph Stein		PRESIDENT'S AWARD	

\*Denotes exhibits in classes other than "Czechoslovakia"

\*\*Postal History Society Awards

All awards of the SOCIETY FOR CZECHOSLOVAK PHILATELY were in form of plaques. The Grand and Gold awards picture the profile of Pres. T. G. Masaryk. The Silver award and the Lowey award picture Jan Hus and the Bronze award pictures the warrior Žižka. These plaques, as usual, were graciously donated by our former President, Mr. Joseph J. Janecka, Jr.

The complete catalogue listing of exhibits in the "CZECHOSLOVAKIA" class is as follows:

No.

Frames Exhibit

- 2 EMIL J. MICHAELSON, Union, N. J.—Bohemia and Moravia, and Slovakia, the Lost Countries of Czechoslovakia.
- 2 JOSEPH STEIN, Brooklyn, N. Y.—Czechoslovakia—Secret Engraver's Marks. Initials or marks of engravers in the design of Czechoslovakia stamps.

### THE CZECHOSLOVAK SPECIALIST

Vol. XXXV

November 1973

No. 9, Whole No. 335

Published monthly except July and August

Second Class Postage Paid at Lawrence, Kansas 66044

Office of Publication, 821 Vermont St., Lawrence, Kansas 66044

\$5.00 per year

Editor: Henry Hahn, 2936 Rosemoor Lane, Fairfax, Va. 22030

Managing Editor: Harlan W. Miller, 821 Vermont St., Lawrence, Kans. 66044

Postmaster: Send form 3579 to 821 Vermont St., Lawrence, Kans. 66044

- 3 RICHARD GREEN, Livingston, N. J.—Pre-Philately of Moravia and Silesia.
- 9 HENRY HAHN, Fairfax, Va.—Czechoslovakia—Specialized. 1918 transition period, field posts, locals, overprints, emergency and mixed frankings, proofs, plate and printing varieties.
- 9 OTAKAR KUTVIRT, Rochester, N. Y.—“Know Your Stamp” Selected pages from a study of Czechoslovakia’s 25h blue Hradčany issue.
- 6 DR. L. V. FISCHMEISTER, Augusta, Ga.—Czechoslovakia. Selected pages from a specialized collection with emphasis on “P. Č. 1919.”
- 3 CHARLES CHESLOE, Willow Springs, Ill.—Czechoslovak Postal History—The Pre-Republic Era. Stamped and stampless covers used in Czechoslovak territory.
- 6 ALEC McMILLAN, Auckland, New Zealand—Field Posts of Czechoslovakia. Covering the Siberian Legion 1918, Czech army 1938, Slovak army 1940-45, Army in France 1940 and in Great Britain 1940--45.
- 6 GEORGE A. BLIZIL, Hollywood, Fla.—Prag Postmarks. Selected pages from a collection of postmarks and cancels of Prague, 1784 to date.
- 5 C. J. PEARCE, Coalgate, Okla.—Czechoslovakia Chainbreaker Issues: A specialized study including essays, proofs, trial colors, perforation and plate varieties.



Sunday Morning Brunchers—(Rear standing, left to right) Carrigan, Fischmeister, Mrs. and Mr. Gray, Stein, Mrs. Hahn, Vondra, Collins (opposite, standing, left to right) Kutvirt, Hotchner, Krejci, (at head of table, clockwise) Torrey, Klozar, Mr. and Mrs. Hawthorne, Meeks, Mrs. Collins, Mrs. DeLany, Mr. DeLany, Hotchner Jr., Mrs. Krejci and Sandrik

On Sunday, a total of forty members turned out for what must have been the world's greatest morning brunch at the home of Henry and Marilyn Hahn. It was an outdoor affair and even the sun, which had played hide and seek with the rain for two days, smiled down on the occasion with full approval.

The morning's activities opened with a short religious meditation by Washington Branch member, Pastor Milan de Lany, who reminded us that stamps are on occasion used on franking letters, and that each of us is, according to Corinthians, chapter 3, verse 2-3 a living letter. For it says: "You are an open letter—written not with pen and ink, but with the Spirit of the living God. Our message has been engraved, not in stone, but in living men and women." Pastor DeLany concluded saying . . . In closing I am anxious to leave with you the thought that as collectors in our society or club we allow God to inscribe in our hearts such things as: love, honesty, friendliness, helpfulness, and much more. These will bring happiness, not only into our



Pastor DeLany Opening the Morning's Activities

own lives, but also the others we associate with. "You are an open letter—written not with pen and ink, but with the Spirit of the Living God." Amen, and God bless you all!

Gordon Torrey, president of Rossica, highlighted the program with a fine illustrated talk on "Turkish Postal History." Your President then presented a Special Award to Joseph Stein for the most original exhibit in the Czechoslovak group. Entitled "Secret Engravers' Marks," this is a "first" in our Society and Joe tells us it is a complete record of all known secret identification marks which engravers have put on stamps of Czechoslovakia. He has consented to a limited reproduction of his exhibit which will be offered to our members in the near future.

The business portion of the meeting resulted in the decision to publish a cumulative index of material in the SPECIALIST since the last such index had appeared over ten years ago. Mrs. Henry Stollnitz volunteered to undertake this formidable task, with the able assistance of Mr. M. F. Klozar of Elmhurst, Illinois.

The meeting ended with a note of thanks to Bill Sandrik, the exhibition chairman, for his efforts on behalf of our Society at NAPEX and for arranging for our program speaker. Thanks were also extended to the Hahns for making their residence available and to the entire Washington branch for being such fine hosts.

This was the satisfying part of NAPEX.

The disappointments were many, including the fact that the SOCIETY received no acknowledgement on the printed program even though it was the largest single exhibitor at the show. For this oversight, Chairman Hoffman publicly apologized at the NAPEX banquet. But worse than that was the apparent lack of knowledge and understanding of Czechoslovak philately on the part of the NAPEX judging panel and the persistent refusal by NAPEX officials to allow our Society to judge with respect to SOCIETY awards, even though a similar courtesy had been extended to the Postal History Society.

If there is a lesson to be gained, it is that our SOCIETY must never again agree to exhibit at a national show without a clear understanding that its exhibits will be judged by a competent panel, i.e. one which includes at least one member accredited to judge Czechoslovak material. As for our

own SOCIETY AWARDS, past national exhibition committees have granted us the right to name a separate panel of judges. This prerogative must be retained, particularly if our awards are to be more than a mere echo of awards made by the regular exhibition judges. Above all, more judges understanding Czechoslovak philately must be accredited to assure recognition of our exhibits at national shows.

### From the Editor's Stock Book

Bill Sandrik, NAPEX '73 Chairman for our SOCIETY writes: "I would like to thank all participants, exhibitors, members (and wives) who manned our lounge and the many others who contributed their time and effort. Special thanks to Joe Janečka for donating the beautiful awards and to ARTIA for the beautiful Bohemian cut crystal vase awarded for the best Czecho exhibit in show. And very special thanks to the wives and members of the Washington Brunch Bunch (formerly known as Branch) for the fine spread and fine time."

George Blizil, U. S. Commissioner to POLSKA '73 writes: (In answer to an inquiry by your Editor as to how the SPECIALIST fared) "... the CZECHOSLOVAK SPECIALIST did not arrive in Poznan in time for POLSKA '73. You are one of the 79 exhibit numbers explaining your entry did not show. The APS American Philatelist did not show either ... Jerry (J. J. Verner) was listed in the program as an exhibitor from Afghanistan ... he won a Vermeil medal. Yvonne King of Worthing (England) received a Silver Bronze. And I, as editor, got a silver-bronze for the German Postal Specialist, and DAS IST."

Yvonne King writes: "... we had a meeting of the Czecho. Phil. Soc. of Great Britain last Saturday ... on May 25 next year we are holding a one day convention in Worthing. The plans are in the early stages at the moment but I shall report more after our next meeting on Nov. 3rd. We are considering having a commemorative cover ..."

Ed Lisy, our SECRETARY writes: "Stephen Page, our outstanding Junior Member has been elected President of the Junior Philatelic Society ... CONGRATULATIONS ... Steve writes that he would eventually like to see Junior Members of our SOCIETY represented on the Board and when there are enough Junior Members he would like to see a page devoted to the Junior Division in the SPECIALIST. He asks for application blanks and offers his help to our SOCIETY ... WHAT MORE CAN WE ASK?" (Stephen: the SPECIALIST is 100% behind you—how about a regular ½ page column called "JUNIOR PAGE" by Stephen Page NOW?)

Mr. Alex Kanawaris, Pres. of POLAND AND CZECHOSLOVAKIA PHILATELIC SOCIETY (2896 Oak Knoll Road, Pebble Beach, Calif. 93953) has sent us copies of the first two issues of his P. C. P. S. Journal and has offered cooperation of his newly formed society with ours. Based on a review of the P. C. P. S. Journal the new organization is devoted primarily—possibly entirely—to new issues of Poland and Czechoslovakia. We must assume that organization of the POLAND AND CZECHOSLOVAKIA PHILATELIC SOCIETY has taken place in response to a need by collectors (rather than for commercial purposes), and thus we wish to extend a welcoming hand to the new organization and journal in helping us serve the needs of Czecho. collectors throughout the English-speaking world. The SPECIALIST will, of course, continue to bring its readers news of new issues, as they are received from ARTIA, though in condensed version.

HH



Interior view of two of our 4 floors at 3 East 57th Street

## we're more than just a pretty face or the world's most beautiful stamp store

Our activity in the editorial management of the Scott's Catalogs and our unique tradition as the world's first major stamp auction house, are your assurance of unparalleled expertise and integrity.

Buying or selling . . . at auction or through direct sale . . . the extraordinary facilities of Harmer Rooke mean efficient, expeditious and courteous service.

**NO DISTANCE TOO GREAT! NO PROPERTY TOO LARGE!**  
**DIRECT INQUIRY MAY BE MADE BY CALLING, TOLL FREE,**  
**ON THE HARMER ROOKE "HOT-LINE" 800-221-7276**  
from anywhere in Continental U.S.A. except New York State  
(In New York, Call (212) PLaza 1-1900)

**HR** *Harmer, Rooke & Co., Inc.*  
INTERNATIONAL AUCTIONEERS • SALES AGENTS • APPRAISERS  
3 East 57th Street New York, N.Y. 10022 (212) PLaza 1-1900  
ESTABLISHED: LONDON 1903 • NEW YORK 1939

## Election Results

In accordance with Par. 4, Bylaw 5 of the Bylaws of the SOCIETY, requiring publication of results of the election for Directors of the Society, the following ballot count is reported by ballot counters Emil J. Michaelson and Thomas Buresch:

Candidate	No. of votes rec'd		
Edward Lisy	114	Joseph Janecka	81
Wolfgang Fritzsche	111	Joseph Stein	80
George Blizil	109	Mrs. Joseph Sterba	80
Henry Hahn	108	L. V. Fischmeister	74
Mirko Vondra	99	Otakar Krejci	65
Thomas Meeks	97	C. J. Pearce	62
Charles Chesloe	85	William Schoenig	61
		Jay Carrigan	61

A total of 129 valid ballots was received and counted. Messrs. Lisy, Fritzsche, Blizil, Hahn and Vondra are declared elected for a term of four (4) years commencing January 1, 1974. Messrs. Meeks, Chesloe, Janecka, Stein and Mrs. Sterba are declared elected for a term of two (2) years commencing January 1, 1974.

---

### SECRETARY'S REPORT

#### NEW MEMBERS (REGULAR)

- 1012 Abraham Siegel, c/o Kover King, 120 West 44th Street, New York, N.Y. 10036
- 1014 Vaclav Vanik, 2613 So. Ridgeway, Chicago, Ill. 60623
- 1015 Paul Chosid, 2715 Claflin Ave., Bronx, N. Y. C., N. Y. 10468
- 1016 Miroslav V. Schubert, 2450 Virginia Ave., N. W., Washington, D.C. 20037
- 1017 Boris B. Joffe, 367 Starin Ave., Buffalo, N. Y. 13216
- 1018 Charles R. Collins, 19 Empire Place, Greenbelt, Md. 20770
- 1019 Harvey Lineback, P. O. Box 254, Leonardtown, Md. 20650

#### NEW MEMBER (ASSOCIATE)

- 1013 Donald A. Johnson, 4571 Elgin Street, Vancouver 10, B. C., Canada

#### MOVED AND LEFT NO FORWARDING ADDRESS

- 673 Paul Hale Brighton, Illinois 62012
- 667 Joseph Voytek, Montreal, Que., Canada
- 890 Alfred Jensen, San Luis Obispo, Cal. 93104

#### RESIGNED FROM SOCIETY

- 508 Millard Beyer, Dix Hills, N. Y. 11746
- 863 James Franz, Landing, N. J. 07850
- 925 Mrs. Lillian Sorrels, Houston, Tex. 77035
- 922 Frank Capek, Ridgefield Park, N. J. 07660
- 929 Mrs. Lee E. Collins, Washington, D. C. 20016
- 911 Miss Linda Stevenson, San Francisco, Cal. 94134
- 898 Peter T. Cyr, Portland, Maine 04102

#### CHANGE OF ADDRESS

- 88 Frank J. Kaps, 931 Dupont Ave., Winter Park, Fla. 32789
- 957 Mrs. Ellen Geisler, 290 Rivers End Road, Gahanna, Ohio 43230

## SECOND MAIL SALE

Sale ends December 15th

DR. L. V. FISCHMEISTER, M.D.

Veteran Administration Hospital, Augusta, Georgia 30904

All stamps mint, unless otherwise stated.

The prices below represent MINIMUM Bids. (Ausrufpreis)

1.	1918, Prague II. Revolutionary, compl. VF, signed	\$70.00
2.	Hradcany. 19h imp. 43a, M25, LUXUS	7.00
3.	— 20h imp. 45a, M27, LUXUS	27.00
4.	— 30h imp. 47a, M29, LUXUS	29.00
5.	— 5h, tete-beche gutter, 2a, 2KZ, F	8.00
6.	— 10h, tete-beche gutter, 3a, 3KZ, VF	14.00
7.	— 10h, vert. gutter, 3a var., 3SZ, VF	21.00
8.	— 10h, perf. 11 $\frac{3}{4}$ , 43b, M25B, VF	3.50
9.	1919, 40h, invert. overp. B11 var., M45, VF	3.00
10.	— 20h, light green, B8a, M64b, VF, signed	15.00
11.	— 30h, viol., invert. overp. B 10 var, M66 inv., VF	3.50
12.	— 1K, black. overp. B17, M50b, VF, signed	18.00
13.	— 3k, claret, B119, M52, VF, signed	325.00
14.	— 4K, l. green, B20, M57, VF	3.00
15.	— 10K, viol. B21, B58, VF, signed	85.00
16.	— 10K, rare black violet, yel. paper, B21A, var., M54, VF	160.00
17.	— 2h, black overp., B35, M69b, VF, signed	20.00
18.	— 14h, B43, M77, VF	16.00
19.	— 25h, B44, M78, VF	13.00
20.	— 30h, B45, M79, VF, signed	75.00
21.	— 50h, B46, M80, VF, signed	250.00
22.	— 15h, B49 var., M83 var., offset, VF	3.50
23.	— 15/2, B59, M93, VF, signed	27.00
24.	— 10/24, B60, M94, VF, signed	23.00
25.	— 2/34, B62, M96, VF, signed	23.00
26.	— 5K, B56, M90, VF	11.00
27.	— 10h, B26, M98, VF, signed	335.00
28.	— 3f, B66, M106, VF	7.00
29.	— 50f, B68 var, M109 var. invert. overp. VF	3.00
30.	— 15f, White num., B72, M119, VF, signed	28.00
31.	— B73, 4, M120, 1, invert. overprint, VF	4.00
32.	— 3K, B88, M135, VF	10.00
33.	— 5K, B89, M136, VF, signed	28.00
34.	— 10K, B90, M137, VF, signed	235.00
35.	— 1f, red num., B115, M150, F	39.00
36.	PC 1919, 40f, inv. overpr., B94, M141, VF	4.00

37. — 50f, B95, M142, VF -----	8.50
38. — 50f, var., invert. overpr., B95, M142 -----	16.00
39. 1920, Dove and Aleg. 20h, imp. 84c, M167I, VF -----	3.00
40. — 5h, 5h, 10h, imp. 65b, 82b, 83b, M162, 3, 4, VF -----	8.50
41. — 40h, T I., 71 var., 173I, VF -----	4.50
42. — 20h, tete-beche, 84a, M167K, VF -----	8.00
43. — 20h, large gutter, same, M84d, 167KZ, VF -----	18.00
44. — 50h, tete-beche, 87a, 175K, VF -----	16.00
45. — 50h, gutter, 87d, M175 KZ, VF -----	21.00
46. 1923, 200h, Type II, both perf., 93 var., M203 II AB, VF -----	7.00
47. — 200h, Type III, 13¾, M203III, A, VF -----	5.00
48. — 200h, Type III, 13¾:13½, M203III B, VF -----	28.00
49. — 300h, Type II, perf. 13¾, 94II, M204 IIA, VF -----	14.00
50. — 300h, Type III, perf 13¾:13½, M204III B, VF -----	3.50
51. Olympic Congr., B137-9, M209-11, COMPL. WZ., 5678, VF -----	120.00
52. Sokol, used, B140-3, M212-5, VF used -----	18.00
53. 1926. Strahov, 1, 20, WZ, 122, M249, VF -----	2.50
54. — 2.50, WZ Bloc of 10, VF, 111, M252 -----	16.00
55. — 2.50, no WZ, bloc of 4, 135, M262, VF -----	8.00
56. Tatra. 2k, no WZ plate no 5, 137, M263, VF -----	3.00
57. — 3k, plate n. 3, 120 and 138, M 254 and 264, VF -----	5.00
58. — 3k, WZ 7, block of 4, type I, 120, M254, VF -----	4.00
59. — 4k, O WZ, plate n. 1, 139, M265, VF -----	5.00
60. — 5k, O WZ, plate 1, 140, M265, VF -----	5.00
61. — 5k, WZ 6, 122, M256, VF -----	7.00
62. — 5k, compl. WZ 5678, rare compl., 122, M256, VF -----	30.00
63. 7936. Compl. gutter, 218-223, 240, M351-356 SZ, VF -----	5.00
64. 1945. Vert. gutter, 4 stamps, VF, 307-9 var., 408-10 -----	6.00
65. 1956. Costumes. Compl. sheets of 10, NH, 776-9, M994-7, VF -----	15.00
66. 1962. Phil. exp. sheet of 4, NH, rare, 1080, M1314, VF -----	16.00
67. Air Mail. 24K OPEN SPIRAL, C2 var, 193R, VF, imp. -----	20.00
68. — 14K invert. overp. C1a, 192A inv., VF -----	20.00
69. — 5K light brown, block of 4, plate 1, C15, M308a, VF -----	10.00
70. SIBERIA, 10 kop. blue. M1a, Overprint, VF signed -----	245.00
71. — 2k-1R, compl. overpr., 6-14, M9-17, VF signed -----	42.00
72. — 25, 50, 1R compl. 11½ used, 1-3, M4-6A, used VF -----	12.00
73. 1920. Masaryk, 500 and 1000, VF, signed, 31, 2, M26-7 -----	40.00
74. Newspaper. 5hal. gutter, rare, VF, signed, P27, M365 -----	130.00
75. — 1913, Narodni Politika, block of 8, VF -----	8.00

Please bid early. Lots are guaranteed genuine and as described provided returns are made within 7 days (Europe 10 days). Postage and insurance extra. KEIN AUFGELD. Der US \$ kostet petzt nur 2,40 DM. M-Michel Katalog.

End of Sale

DR. FISCHMEISTER

Member APS, Czechoslovak Philatelic Society

Bundesarbeitsgemeinschaft Tschechoslowakei und Oberschlesien

---

**EDWARD O. TABOR, Jr.**

It is with a profound sense of loss that we announce to our readers the passing of our dear friend and devoted Assistant Editor, Ed Tabor. Ed succumbed after long illness on October 9th, 1973. He is survived by his loving wife Margie, his son David, his mother, Mrs. Marguerite K. Tabor, his sister Mrs. Marguerite Yates and his brother John K. Tabor.

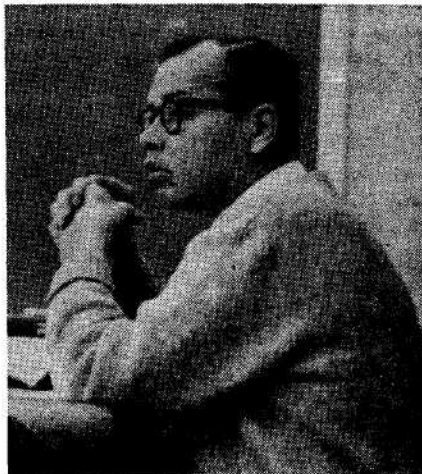
The last of Ed's 54 years of life were a source of inspiration to those of us who knew him and met at his home for some of our Washington Branch meetings. Ed was bedridden due to severe and painful arthritis, and his days were made a bit happier by philately, the SPECIALIST to which he devoted his few pain-free hours, and his many philatelic friends.

His last other-than-family visitors before entering the hospital were members of our SOCIETY, who visited him as a group during the NAPEX week-end. Some of these from out of town met Ed for the first, and sadly, last time.

In professional life Ed had been an engineer and teacher. He was proud of his Czech heritage, loved music and was a source of faith to those of us who saw his spirit triumph over his pain racked body.

Funeral services took place on Friday, October 12th at the Episcopal Church in Bethesda, Maryland.

We will cherish his memory.




---

**A RECORD VOTE!**

By Mirko L. Vondra, President SCP

The polls have closed and the vote has been tabulated. The results appear elsewhere in this issue and those who were elected deserve to be congratulated.

But behind this vote is another story with a more significant meaning. A specially appointed balloting committee consisting of Thomas Buresch and Emil Michaelson counted and certified the ballots and announced that a total of 129 ballots were cast. With a present membership of 276, this means that almost 50 percent of all our members scattered all over the country and the world have mailed in their completed ballots. It means that we now have a new and revitalized SOCIETY in which half of its membership considers itself concerned with the affairs of the organization. This is a healthy sign. Could it be that open balloting has something to do with it? As one member told me "Now that I had to sign my name to the ballot, I realized that the Society cared and I made sure to let them know I was voting." Thanks to all for caring and for casting a record vote!

As for the meaning of the vote itself, the persons receiving the five highest number of votes have been elected to serve on the Board of Directors for four years starting in January 1974. The persons receiving the next five highest number of votes will serve on the Board for two years starting in January 1974. This is necessary only because this is our first election as an incorporated SOCIETY. Under our Bylaws, half the Board (or five members) must be elected every two years. Hence in two years, an election will be held replacing the five Board members elected now for a two-year term, but from that point on, they will always be elected for a four-year term. Thus the Board will alternate its membership—five new Board members being elected every two years.

### New Issues

Word of the following new issues has recently been received through the courtesy of ARTIA Foreign Trade Corporation of Prague:

Date of issue: August 23, 1973

Single value (30h) entitled "400 Years of Olomouc University." Issued the same day was a lovely set of six values entitled "Flora Olomouc" and dedicated to the traditional flower show of Olomouc in Moravia. The three high values are pictured below.



Date of issue: September 5, 1973.

Six values entitled "50th Anniversary of Czechoslovak Huntsmanship."

Date of issue: September 17, 1973.

Five value set of Commemorative Stamps entitled "The Art of Max Svabinsky," pictured below.



### Charley's Corner

By Charles Chesloe, Lox 237, Willow Springs, Ill. 60480

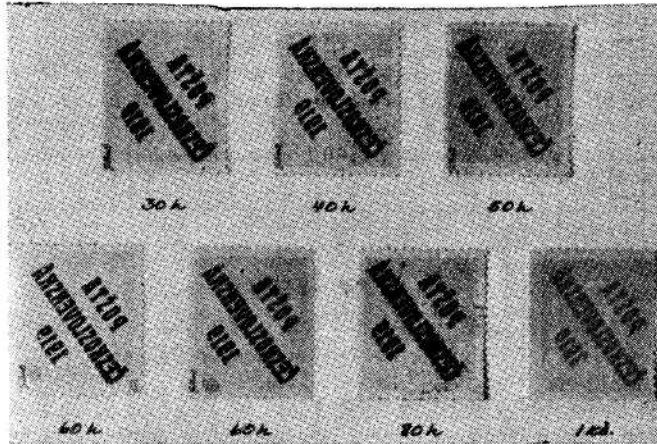


Fig. 1

The "Pošta 1919" series is our subject for discussion this month, limiting ourselves to those that appear on the gummed side only, and only to those that appear on the regular issue of Austria as overprinted and listed in Scott as B-1 through B-17. These exist in two types: in Type I the diacritical mark in the word "Pošta" rests on the "S"; in Type II it is visibly above the "S".

In the first category consider the offsets of the overprints. An offset occurs when the printing plate absorbs an overprinted impression on the bottom half due to an incomplete pane preceding the "Offset," or where, somehow, the sheet was improperly fed into the press, causing, thus, the next sheet to absorb the impression on the gummed side. Figures 1 and 2 show this result. Figure 2 shows an interesting variety of the 3 heller value where only the right-hand copy shows the offset.

Please note that care must be taken not to confuse offsets with overinked overprints that sometime have a tendency to show an impression through the paper but remaining under the gum. These are often found on the Hungarian overprints because the Hungarian samples are often found on thin paper. True offsets are impressions OVER the gum.

In the other category let us consider the stamps overprinted on both sides. This happens when the sheet or partial sheet of stamps is reversed so that the overprint is applied directly to the gummed side. Figure 3 shows the over-

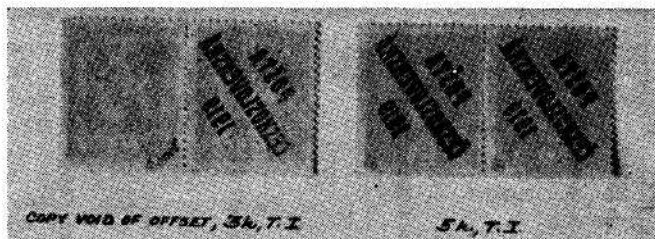


Fig. 2

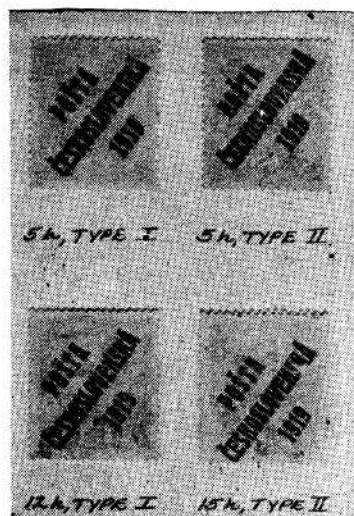


Fig. 3

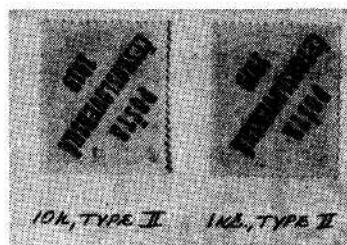


Fig. 4

print in the normal position, and Figure 4 shows the overprint in the inverted position. One can only guess why these copies were put through the press a second time; I suggest that it was done intentionally to enhance their value to collectors. They differ, thus, from offsets that are legitimate errors because they were fed into the press only once.

Note that in Figure 4, the 1 Kč is the black overprint.

Thus, there are these two varieties of printing on the gummed side; practically all values of the "Pošta 1919" series can be found to exist; so in forming a "good" collection of "Pošta" this material should be included.

Good hunting! See you next month.

#### CZECHOSLOVAK SPECIALIST GRANTED SECOND-CLASS MAILING

The Czechoslovak Specialist, after applying last December, has finally been given permission by the Post Office Department to mail under second-class rates. This is considerably cheaper than the third-class rates under which the Specialist has been mailed for many years. There are some minor rules that go with the permit—one is the annual statement of ownership and which includes the number mailed—which appeared in last issue. There are also a few changes in the application for membership blank which will be corrected. The Post Office Department wants each applicant to know the definite amount that goes for the Specialist (the whole amount on a regular \$5.00 membership, and \$5.00 of the Patron membership of \$15.00) and for some obscure reason the applicant is to be provided for a place to check if he doesn't WANT to receive the Specialist. Inasmuch as the Specialist is the main reason for joining, I can see no reason for not wanting to receive it, however there must be some reasoning behind it. Also the Honorary members aren't allowed to receive theirs free, however ANYONE can be given a gift subscription to ANY magazine, so that will be taken care of. The reasoning for this rule is also obscure.

My place of business is given as the Office of Publication, as it is (or has been) permanent which should be more satisfactory than the address of an officer which changes frequently. Official business should be conducted as in the past with the proper elected officials.

—Harlan W. Miller, Managing Editor

**Our 20th Year**

# **K-Line's Czechoslovakia Pages**

**SUPPLEMENT No. 20-1972**

**\$3.20** plus 55c postage

(Fully illustrated and expertly annotated)

**Our Motto:**

**"You will find cheaper pages—but better will be hard to find"**

**AS A SPECIAL FEATURE WE PROVIDE A  
CZECH NEW ISSUE SERVICE**

**As a subscriber to our K-Line's Czecho New Issue Service you will receive next year's supplement at no charge, except for postage. Write for details.**

**K-LINE PUBLISHING, INC.**

**P. O. Box 159**

**Berwyn, Ill. 60402**

**P.S.—Besides Czecho, we have a line of pages for 15 countries and 11 Topics.**

## Stumped On Stamps? ? ?

By Richard Gray

3466 Mildred Drive, Falls Church, Virginia 22042

Here for a change is a question that I have found in need of an answer. Involved specifically are the plate numbers on the "London Printing" issue of sixteen stamps used in Czechoslovakia between 1945 and 1948 (Scott #272 through #287; Pofis #387 through #402). These were printed in London during World War II by de la Rue & Co., Ltd., on order of the Czechoslovak Government-in-Exile for use in Czechoslovakia after the war. The stamps bear portraits of eight members of the Czechoslovak Army in Exile who died fighting the Axis Powers in every corner of the world.

The panes of these stamps have 200 (10x20) stamps each with the plate number "1A" or "1B" immediately under the 192nd stamp of each pane. This corresponds with the printing scheme for then current British small-size stamps. It is the plate numbers that I am questioning: even with the naked eye there is a difference among the plate numbers in size, thickness, and shape that can be readily discerned. There is no apparent reason I can think of for such distinct differences and the Novotný Specialized Catalogue makes no remark about it at all.

From the limited supply I have on hand, I have made the following measurements, in millimeters, for the width only of the two letters "A" and "B" only.

Value	"A"	"B"	Value	"A"	"B"
5 h	4.5	3.5	1.—K	4.5	3.8
10 h	4.0	3.0	1.50K	3.5	2.5
20 h	3.5	3.2	2.—K	4.0	2.8
25 h	4.0	3.0	2.50K	4.0	3.0
30 h	2.5	2.5	3.—K	2.5	2.5
40 h	2.5	2.2	4.—K	4.5	2.8
50 h	4.5	3.5	5.—K	4.0	3.0
60 h	4.2	3.0	10.—K	2.5	2.5

A number of questions present themselves from this data.

Was the plate number engraved on the plates, or was it added to the plates from existing stocks?

Are any of the plate number letters different in size for the same value in view of the fact that the printing order extended to around fifteen million stamps for six of the values; the highest order was for 16,500,000 for the 50 heller. (Pofis data.)

Is there any explanation for stamps having the same design (but with changed values) exhibiting different widths for the plate number letter? Only the 25 heller—2.50 K and the 30 heller—3.00 K pairs have the same letter dimensions.

More time needs to be devoted to these questions, and we should appreciate any help our readers may be able to give us. Do you have any plate number blocks of this London issue handy? If so, measure the letters as I have done, and, if different from my data, please send it on to me along with your description of the "A" and/or the "B," particularly noting whether the "A" has a low or a high bar, and whether the loop in the "B" is bigger on the top than on the bottom, and whether the numbering is or is not double-lined as found in the case with the 50 heller—5 Kč values. Any related data and/or questions will be most welcome.

---

---

---

---

---

# **WANT TO BUY**

MINT MINT  
**CZECHOSLOVAKIA**

ISSUES 1923-1926  
(Scott Nos. 92-118)

Full Sheets

Part Sheets

Blocks

Die Proofs

Color Trials

Plate Proofs

Rare Perforations

Varieties

Rare Watermark Positions

**ARTHUR I. KESSLER**

221 East 78th Street

New York, N. Y. 10021

---

---

---

---

---