



THE CZECHOSLOVAK SPECIALIST



(USPS 808300)

Official Quarterly Journal of the Society for Czechoslovak Philately,
an Incorporated Non-Profit Organization

Winner of Numerous Philatelic Literature Awards

The Specialist is in color, sponsored by the Phil Melamed Trust in honor of Charlie Chesloe.

A.P.S. Unit 18

ISSN: 0526-5843

Vol. 78

WINTER 2016

No.1, Whole No.643

Renewals and Philatelic Troubles

I owe a number of you an apology.

On the cover of the previous issue (Fall 2015), where I put "THIS IS YOUR LAST ISSUE / So Please Renew Now For Next Year!", I should have placed beneath it "(unless you have already paid your dues)".

You had already received our first-class renewal request, reacted to it, and had sent in your renewal. Then you received the Fall issue, saw the cover, and thought you still needed to renew. So you sent in your dues again.

My mistake. Your choices now are to leave the second dues amount with us as advanced payment of your 2017 dues, or to contact us and ask for those funds back. You can do that by e-mail, mail, or phone to our treasurer, Marisa Galitz. You can reach her at: mmgalitz@gmail.com, 786-228-6805, or 8932 Groffs Mill Drive, Owings Mills, MD 21117 respectively.

If you do not contact us and had paid us twice for 2016 dues, you will automatically become a prepaid member. All prepaid members for 2017 will receive a postcard confirming their status from Ms. Galitz. Keep the postcard as a reminder so you don't pay again in December 2016 / January 2017.

(Continued on page 4)

TABLE OF CONTENTS

ARTICLES	AUTHOR	PAGE
1. What Can You Do for Your Society.....	Chris Jackson, Ludvik Svoboda.....	3
2. Legioplak (The Legion Train.....	Jaroslav Verner.....	5
3. Photographic Typography.....	Mark Wilson.....	11
4. Use of the Express Stamp.....	Hans van Dooremalen.....	19
5. RMSS & WSS.....		26
COLUMNS		
6. Closed Albums.....		13
7. Spotlight on Books.....	James Buckner.....	15
8. Letters to the Editor.....		16
9. Philatelic News and Views.....		17
10. New Issues	Ludvik Svoboda.....	27

MEMBERSHIP BENEFITS

Here is a list of all benefits to which S.C.P. members in good standing are entitled.

1. A sales circuit is operated by H. Alan Hoover. However, the circuit is currently not operating because of a lack of materials from members. When this situation is remedied we will notify you in the *Specialist*.
2. A book sales division is run by James Buckner. A listing of philatelic books for sale appears regularly in the *Specialist*. For further information, contact James Buckner, 322 Woodhaven Drive, Athens, GA 30606, email wellseats@hotmail.com
3. A Society library is housed with Ludvik Svoboda, librarian. For inquiries on borrowing books, buying past *Specialist*'s or making book donations, contact Ludvik Svoboda, 4766 S. Helena Way, Aurora, CO 80015, or email: Lousvoboda@comcast.net
4. An expertization committee operates under the direction of Ludvik Z. Svoboda. Depending on the nature or substance of the item to be expertized, he will direct you to the appropriate source for expertization. Please contact Ludvik Z. Svoboda. (see address/email above).
5. THE CZECHOSLOVAK SPECIALIST is the official quarterly publication of the Society. For inquiries on obtaining back issues, contributing original articles, advertising rates, and bound copies, contact Ludvik Z. Svoboda (see address/email above).
6. Our web site (www.csphilately.org) on the Internet provides Society information on Membership, History, Education, Auctions, Exhibits, Book Reviews, Contacting other members via email, and more. The site is maintained by Marisa Galitz, 8932 Groff's Mill Drive, Owings Mills, MD 21117, email: mmgalitz@gmail.com.

THE CZECHOSLOVAK SPECIALIST

(ISSN 0526-5843)

Official Journal of the Society for Czechoslovak Philately, Inc.

A.P.S. Unit 18

Vol. 78

Winter 2016

No. 1, Whole No. 643

Published quarterly - \$25.00 per year

Membership inquiries to Secretary (address below)

Periodical paid at Shippensburg, PA 17257

POSTMASTER: Send address changes to

THE CZECHOSLOVAK SPECIALIST

11½ North Washington Street, Shippensburg, PA 17257

Web Site: www.csphilately.org

Editorial Staff

Managing Editor: Ludvik Svoboda, 4766 South Helena Way, Aurora, CO 80015

Email: Lousvoboda@comcast.net Phone: 303-680-7118

Assistant Editor: Marisa Galitz, 8932 Groff's Mill Drive, Owings Mills, MD 21117

Elected Officers

President: Chris Jackson, 6 Sunnyside Dr, SS1, St. George, ON, Canada N0E 1N0

Vice-President: Ludvik Svoboda, 4766 South Helena Way, Aurora, CO 80015

Secretary: Tom Cossaboom, Box 4124, Prescott, AZ 86302

Treasurer: Marisa Galitz, 8932 Groff's Mill Drive, Owings Mills, MD 21117

Appointed Officers

Book Sales: James Buckner, 322 Woodhaven Drive, Athens, GA 30606

Circuit Man.: H. Alan Hoover, 6070 Poplar Spring Dr., Norcross, GA 30092

Expertizing Chairman.: Ludvik Svoboda, 4766 South Helena Way, Aurora, CO 80015

Librarian: Ludvik Svoboda, 4766 South Helena Way, Aurora, CO 80015

APS Representative: Tom Cossaboom, Box 4124, Prescott, AZ 86302

All officers and board members serve the Society voluntarily and without compensation.

Society Constitution and By-Laws can be found on the website.

WHAT CAN YOU DO FOR YOUR SOCIETY?

by Chris Jackson, Ludvik Svoboda

We are not a big Society, and most of the time the majority of the ideas and work is done by just a few of our members. Most of our leadership is getting on in years. So we are asking you to consider helping with one of the following tasks so we can share the efforts.

1. Every year the Scott Publishing Company asks us to review various sections of their catalogs that they publish -- Czechoslovakia, Czech Republic, Bohemia & Moravia, Slovakia, Slovak Republic, and Eastern Silesia. In each of these areas, we are asked to comment on what they include, what should be changed, what is missing, what the values of items should now be changed to and why, etc. If you believe that you have some knowledge or skills in any of these individual catalog areas and could help us with a review of one of them, please let us know.

2. If you have ideas on how we can recruit and keep new members, please let us know. Many of us have been in associations or societies that had to develop or had systems or ways to recruit new members. But we especially need suggestions on what we can do to retain our members. Every year we find that about 20-25 of our members do not renew. Sometimes we get a chance to ask why, but most of the time they do not answer. How can we encourage them to renew and answer?

3. Do you have a special area of Czechoslovak philately that you know well?

-- Why not tell other members about it? Write an article. You do not have to be an expert. You may even win a free year of membership in the Society by winning the annual literature competition. Contact the Editor for help (page 2).

-- Why not develop an exhibit of this special Czechoslovak philatelic material for showing at our annual SCP national meeting (with the assistance from Richard Livingston and our other SCP exhibitors)? These days it is quite easy to begin with a one-frame exhibit. Contact the President or Editor for help (page 2).

4. If you know the Czech or Slovak language, would you be able to translate a philatelic article? You do not have to be an expert. The editor will check your work, and you can be a great help. Call or write the Editor for more details (page 2).

5. We need someone to compare and then list POFIS, Scott, and Michel catalog numbers, so a member could quickly identify the catalog number of a stamp from one catalog to another. We already have this work done up through 1999. Now we need someone to update the list through 2015. The Scott numbers for 2015 will probably not be out for another 6 months, so the work will begin about next summer. We will provide the catalog pages, we just need someone to do the comparisons and write down the result list.

So, can you help us? Contact our President, Chris Jackson (page 2, cjstamps72@gmail.com) if you would like to help.

Continued from Page 1

We go to these extremes to encourage renewals because we are a small society (under 200 members) and so every member is very important to us. Every year, for many different reasons, about 30 members do not renew by the deadline. About half of those just forgot to do it. We then have to devote time, effort, and funds to get them to renew, and also to send them their missing issue(s) by first class mail rather than by the normal second class method (first class is more than 5 times as expensive).

✘ ✘ ✘ ✘ ✘

Now, as to philatelic troubles.

I recently sent out a notice to the other Board Members which included the following:

“I received my copy of *The COROS CHRONICLE* today. It is the 387th one. They have been around almost as long as we have (71 versus 77 years).

The cover reads: NOTICE. Officers, Directors, and Advisors Unanimously Vote to DISBAND COROS in 2016.

So this issue is the last one for them. They cannot find anyone to run for office or to **take over as editor** of the COROS CHRONICLE. Sound familiar?”

If you are not familiar with that society, *The COROS CHRONICLE* is the journal of the Collectors of Religion on Stamps Society, which just happens to have about 150 members. Thus in age and size, we are quite similar.

In this issue you will see an article entitled “**What Can You Do For Your Society?**”. It is one of the ways that we are trying NOT to end up like COROS has.

Our leadership is aging (I just turned 76, and a number of our Board Members are in their late 70's or in their 80's). Consequently we need help with leading and operating our Society.

If you find that you have some time or talents that you might volunteer to help prevent the SCP from ending up like COROS, please contact our president, Chris Jackson (see pg 2, and cjstamps72@gmail.com).

Please help us to stay alive.

Ludvik Z. Svoboda



*Happiness is finding out
that the postcard
you bought for \$2 ages ago
is now worth \$150,
even though you'll never sell it!*

LEGIOVLAK (The Legion Train)

by Jaroslav Verner

A little more than 100 years ago, October 11, 1914 to be exact, approximately 600 Czechs living in Imperial Russia swore allegiance to the Tsar and became members of the small, specialized unit known as the Цешская Дружина (Cheshskaya Druzhina or Czech Legion). This all-volunteer unit was organized as a Russian infantry battalion, but without machine gun and telephone sections. Initially most of these volunteers were not Russian citizens and had to apply through the Union of Czechoslovak Societies in Russia (Union) and request Russian citizenship as part of their application. Organizationally, the Legion was outside the regular Russian chain of command though all Russian military regulations applied, and its officer and noncommissioned officers were Russian. It was not until March 1915 that Czech became the command language of the Legion.



Blessing of the Cheshskaya Druzhina flag, October 11, 1914 on St. Sofia Square, Kiev. Post card on sale in the Legiovlak.

Components of the Druzhina were assigned to various units of the Russian 3rd Army for propaganda, translation, reconnaissance, and other intelligence functions. The troops quickly prove their usefulness, but losses were suffered and replacements were hard to get. By this time the potential pool of Czech volunteers living

THE CZECHOSLOVAK SPECIALIST

in Russian was fairly well depleted. Czechs with Russian citizenship, due to enter or already in the Russian army, were transferred into the unit and the Union received permission to recruit among prisoners of war (POWs). The Druzhina grew and in February 1916 was reorganized as the Czechoslovak Rifle Regiment, which in turn became the Czechoslovak Rifle Brigade six weeks later, and again expanded and reorganized as the Czechoslovak Army corps in October 1917.

During this entire time, the Legion was primarily located south of Kiev in the Ukraine. This, however, was about to change. Following the disintegration of the Russian army on the Eastern front, the general chaos following the March and November Russian Revolutions, the subsequent Brest-Litovsk Treaty, and a new German offensive, the Czech presence in the Ukraine became untenable. The Legion moved quickly to escape capture by acquiring sufficient rail transport to move the entire Legion East, and after checking the German forces moving to intercept them at Bachmač, ended up in Siberia. The trip from Kiev to the ships in Vladivostok Harbor the Legion eventually boarded proved to be a very long train trip, both in distance, over 6000 miles, and time, the last troops left in September 1920.

Trains are central to the story of the Legion. This army moved in them, lived in them, worked in them, learned in them, suffered in them, and fought from them. Trains, in short, were central to their survival as well as their success. Now almost a century has passed since the Legion left its trains behind in Siberia.

Anniversaries of important events deserve to be marked and the passing of the century since the legionnaires activities in France, Italy, and Siberia are currently being celebrated in the Czech Republic. Especially active in this regard is the Community of Czechoslovak Legionnaires (Československá obec legionářská or Obec), founded in 1921 as an umbrella organization intended to further the interests and needs of the various legion veterans. Working closely with the Czech railroads, the National Technical Museum, the Winged Wheel Foundation and others, the Obec is heading the six year, multifaceted *Legie 100* project which includes: exhibitions, lectures, battle re-enactments, digital games, educational materials for classroom use, books and other publications, graves maintenance, a museum of the Czech legions with an extensive library, and the reconstruction of a train used by the Siberian legions -- the Legiovlak (The Legion Train).

During our second week in Prague this past June, I learned the Legiovlak was on display in the Liberec railroad station, but for only two more days. From there it was headed even further from Prague so all plans and appointments were rearranged, and we headed for Liberec the following day. The Legiovlak was standing next to a warehouse in the station and consisted of an engine and 10 rail cars fitted out as a field post, regimental store, living quarters, medical car, staff car, club car, armored rail car, two flatcars -- one with a field kitchen, the other with an armored car of World War I vintage.

We were told three more cars were currently being renovated/reconstructed which would represent a tailor shop, commander's car, and a "movie" car. The original cars used by the Legion in Siberia essentially were Russian "Teplushky", box cars modified for passenger use, which were again modified for specific uses by Czech military units. Obec had acquired old cars from various sources in the Czech



Legiovlak Field Post car exterior (top) and interior (bottom).



THE CZECHOSLOVAK SPECIALIST



Medical car exterior and interior views.



Interior and exterior of Legiovlak armored railcar.

Republic and at least one from Slovakia. Renovation of the cars is based on old photographs, documents, and original drawings, and is reportedly true to the originals with the exception of adjustments to accommodate visitors and of the width of the wheels. Russian railroad tracks are wider than the European standard. Legiovlak is towed with the assistance of modern engines and will visit cities and towns throughout the Czech Republic and possibly Slovakia over the next three years. Its scheduled first day of showings for the rest of this year was available and further showings will be published when all arrangements are firm. If you are planning to visit the Czech Republic during the next couple of years, make an effort to see both the Legiovlak and the accompanying exhibits. They are well worth your while. Scheduled stops during this year are:

- Pardubice opening on September 12, 2015
- České Budějovice opening on September 19, 2015
- Jihlava opening on October 3, 2015
- Brno opening on October 24, 2015
- Zlín opening on November 7, 2015
- Břeclav opening on November 20, 2015

Philatelists visiting the Legiovlak will certainly focus on the field post mail car. Mail was not only the primary channel of information at the time, but also had a central role in maintaining good morale in an organization consisting of such far flung units as was the Czechoslovak Legion in Siberia. Early on, the Czechs had their mail services provided by the Russian army -- until it disintegrated. After that, the Legion tried using couriers to deliver official mail and informational materials, but quickly discovered couriers could handle neither the volume nor the distances. A military mail system was needed, ordered, designed and quickly organized. Its charge was to provide a regular, secure, and dependable mail connection to all Czechoslovak military units along the Trans-Siberian Railroad and its branch lines. Postal operations were conducted almost exclusively in railcars.

Here is the backstory of how this postal system on wheels was developed and functioned.

On August 11, 1918, Antonín Novotný was appointed Director of the Field Post. The next day he and Josef Zilvar left Omsk together for Chelyabinsk, the headquarters of the Western Front and the designated location for the Field Post Administration (Správa, Polní Pošta Československých Vojsk), traveling in an empty box car. The trip was only 795 km, a mere trifle in Siberia. Between them they had one rifle, some ammunition, warm coats and uniforms with “patches upon patches”, blankets, a tea pot, and a loaf of bread. They arrived in Chelyabinsk hungry and with no place to sleep. The Czech station master Malý promised a 3rd class



Original Field Post office in Teplushka I rail car. Note mail box left of the door.

THE CZECHOSLOVAK SPECIALIST

passenger car (Teplushka I) by evening, and the Commander of Engineers agreed to attach them to his unit for ration purposes. The rail car was delivered as promised, and it turned out to be bright green -- not bad -- since it stood out among the cars in the rail yard making it easier for troops to find the post office when arriving in Chelyabinsk. Novotný hung a smudged sign on the car reading "Polní Pošta Čechovojsk (Field Post, Czecho Army)". On their first night in Chelyabinsk, Novotný and Zilvar slept on benches with their rolled-up overcoats for pillows in the first of the postal rail cars.

Now the hard work began. Starting from nothing, a postal system had to be created to serve the communication needs of military units scattered throughout the Siberian expanse and constantly on the move. The first problems facing Novotný and his expanding staff in reaching his grandiose goal were rather mundane but difficult: obtaining writing materials, log books, finding ink pads, having cancelers made, finding a map of Siberia to enable planning for the location of future field posts, and obtaining and modifying railcars.

Zilvar scoured the shops of Chelyabinsk looking for office supplies. The results of his efforts consisted of 10 pencils, some ordinary writing paper, carbon paper, one eraser and a bottle of ink. Josef Závěcký, another of the early field post volunteers, found an ink pencil and several pens elsewhere -- probably on the Station Master's desk when the owner was otherwise occupied. Zilvar also found someone who was able, after several false starts, to produce several cancelers: one round one with SPRÁVA, et cetera, and several of the straight 2-line types.



ČESKOSLOVENSKÉ VOJSKO
Polní pošta. Čís. 1.

Like any military organization, the Czechs were expected to make requests for their needs "through channels". However, many field post needs were in fact filled through informal requests and "negotiations" with colleagues, scrounging, and other methods all too well known in military life. Such approaches were usually more effective and certainly much faster. Rail cars, on the other hand, were a need which could not be solved informally. As luck would have it, Rudolf Medek, Chairman of the Military Bureau, and to whom Novotný reported, passed through Chelyabinsk, and hearing of the need, instructed the stationmaster to make rail cars available to the Field Post for mail delivery, and gave Novotný 600 rubles to renovate them. The following day, even after the best efforts of the stationmaster, only 10 teplushki could be found. Nine were in "possible shape" and one was "terrible". All were completely bare.

(To be continued...)

Photographic Typography by Mark Wilson



Figure 1: Master Die

The Society was kind enough to ask me to present at its Annual Meeting in Milwaukee my exhibit describing the typographic practices of the Czech Graphics Union. Early on in my presentation, I was asked a question that demonstrated I had not clearly described the full process with respect to photographic typography, so I shall do that here.

Photographic typography was one of the two processes the printer used to produce plates for the first Czechoslovak stamps – the other is matrix typography, but that is a topic for another time. The process began

with an engraver cutting a master die. The die exhibited several distinct features. First, it was twice the size of the issued stamp. Next, the high areas on the face of the die – called *lands* – were intended to carry the colored ink to the paper (in *Figure 1*, the dark areas) while the depressed areas remained inkless. Finally, the die was a mirror image of the stamp it represented – the left side of the die is the right side of the stamp and the denomination digit is reversed, just as holding a stamp up to a mirror would do.

Using this master die, the printer stamped out 100 double-stamp-size *auxiliary* prints. These he pasted to a stiff backing in a 10 × 10 array called a *paste-up*. Below the bottom row of stamps the printer pasted *tally numbers* to be used by postal clerks to compute the value of the stamps remaining in a pane at the end of business.

In order to produce a printing plate using photographic typography a negative was needed. Since, as mentioned above, an auxiliary print was double the size of the released stamps, the photographer used a 50% reduction lens to make the negative.

Figure 3 shows a single cliché from the glass negative but viewed first through the emulsion side of the negative, then viewed from the other side of the glass negative. While both images are negatives – black represents white and white



Figure 2: Paste-up

representing black. The negative was used to produce a printing plate.

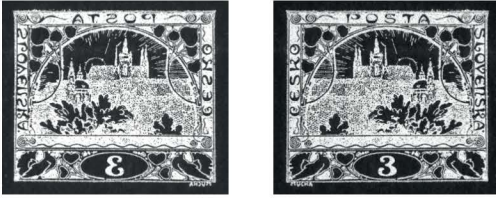


Figure 3: Negative as seen from either side

represents colored areas on the printed stamp – one cliché is a mirror image, the other is not. This latter feature will become important in a moment.

The image on the glass negative, having been reduced 50% from the size of the paste-up, was exactly the

size needed to produce a plate. The process continued by coating a metal plate with a photo-sensitive compound, placing the negative over that compound, and exposing the photo-sensitive coating to light passing through the negative. The light *fixed* the coating so that where the negative was transparent (the white parts of *Figure 3*) the coating solidified, whereas where no light passed through the negative (the dark parts of *Figure 3*), the coating remained un-fixed.



Figure 4: Etched plate

The negative was removed, the coated metal plate washed in a fluid that removed the unfixed coating but retained the fixed, then baked to harden the fixed coating even more. Then the plate was etched. Where the fixed coating remained, the metal was protected, but elsewhere, the etching fluid ate away the metal to produce the same lands visible in the master die. In fact, the plate resembles 100 copies of the master die and is ready to be used to print stamps.

I have described this process – save for one detail – in other articles published in *The Specialist* and elsewhere. That detail has to do with how the negative was placed on the coated metal plate. Note that in *Figure 3* the glass negative is shown from two viewpoints – looking through the negative from both directions. The glass negative had to be placed on the coated plate oriented so that the image was a mirror reversal of the plate. Otherwise, the stamps would have been printed in a mirrored format (remember, the plate is a mirror image of the resulting pane of stamps).

The detail I had previously failed to supply in my explanations was that the negative had to be positioned so that a mirror image was transferred to the plate. Thus, when considering photographic typography, one must keep in mind two image transformations, a negative and a mirror image transformation.

Closed Albums



Frank Garancovsky

Frank, age 91, of Youngstown, Ohio, passed away on Wednesday, January 13, at a nursing home in the company of his son, Mark, after a number of years of health problems.

He was born February 24, 1924, in Youngstown, the son of Andy and Sophia Skovira Garancovsky. After high school graduation (1937), he attended vocational school to learn the machinist trade. After completion of that training he went to work at the Youngstown Welding and Engineering Co. Then in November, 1942, at the age of 18 he enlisted in the U.S. Army Air Corps. After basic training he was assigned to radio

school where he studied radio theory and Morse code. Having completed this, he was appointed to aviation cadet school for officer's training. He was commissioned a 2nd lieutenant in August 1943 as a communications officer. Having formed a cadre of men that created a fighter control detachment, they were assigned to overseas duty in the Pacific Theater of Operations for two years. Following the Leyte, Philippine Islands campaign, he was brought back to Tripler General Hospital in Hawaii and then back to the States. He was honorably separated in 1946. During his military service he was awarded a number of service and campaign medals and ribbons.

Upon his return home, he began employment in the Post Office Department in 1947 as a postal clerk. Frank continued working at the USPS in Youngstown until February, 1978. He retired as Manager of Accounting following his 31 years of service.

He married Helen M. Beney in 1949, and they had one son, Mark, born in 1951. Frank was a noted philatelist with memberships in the APS, the Mahoning Valley Stamp Club, and the Society for Czechoslovak Philately where he was a member (#1489) from 1987 until the present, and served on the board of directors for six years. He also served as a columnist and feature writer for *The Czechoslovak Specialist* as well as for other national philatelic publications. This often included translation services from Czech/Slovak to English. He exhibited at various local, national, and international stamp shows, particularly his Hradčany exhibit.

For his very significant contributions on Czechoslovak philately to the Society for Czechoslovak Philately, he was formally designated an Honorary Member by special announcement of the president.

He was proud of his Slovak heritage and was a member of the American/Slovak Cultural Association of the Mahoning Valley for whom he was a frequent contributor of articles.

Frank, Helen, and Mark always attended our annual conventions and were always gracious and friendly representatives of the Society.

He is survived by his wife, Helen, and his son, Mark.



Charles J. Chesloe

Charles "Charley" J. Chesloe of Willow Springs, IL, passed away peacefully surrounded by family on Monday, January 4, 2016, at his home.

He was born in St. Louis, MO on April 25, 1932, and lived in Willow Springs, IL for 68 years. Charley was an incredible man, a gifted swim coach, and impacted many lives throughout the years. He co-owned and co-ran the Willow Swim Club for 63 years, a community meeting place. His swim teams produced state champions in many categories. As a result, many of the families of the community came to pay him their last respects.



He married Geraldine J. Soden on March 29, 1958, who remained by his side until his passing.

Charley was a committed, life-long Czechoslovak philatelist. He began collecting about 1950 and continued until just recently when he had to part with his treasures. He became immersed in his life-long passion when in 1954 he purchased four covers bearing "Slovenský Štát" overprinted stamps and wanted to know more about them and whether they were genuine. In his search in the Chicago area, he encountered and befriended such Czechoslovak-collecting philatelic notables as Frank Kovarik, John Velek, Doc Matejka, and George Kobylka.

That was the same year that he joined the SCP, becoming member #509 (the second lowest number in our current membership listing). Within the SCP, over the years, he became a prolific contributing author to *The Specialist*, including his column "Charley's Corner" which appeared very, very often from January 1971 through Sep/Oct 2009 -- that is 38 years. In addition, he authored almost 35 other articles over the years on almost every subject pertaining to Czechoslovak philately (e.g., Hradčany, POŠTA overprints, Eastern Silesia, perfins, Bohemia & Moravia).

The fact that he spoke, read, and could write Czech assisted tremendously when he made trips back to Europe and Czechoslovakia to meet and visit with resident Czechoslovak philatelic experts -- Jan Karásek, Fred Hefer, Zdenek Kvasnicka, and Pavel Pitterman to name a few.

In his philatelic career, Charley was a national and international exhibitor (he won the Reserve Grand award at COMPEX 74 for his "Czechoslovakia 1918-1938" exhibit) and was even working on becoming a judge. For years, he and his friend, Bob Koschalk, ran a stamp bourse in the Chicago area. In addition, in 1989 he purchased the rights to the name "Tribuna" from the heirs in Czechoslovakia, then operated a stamp auction business named the Tribuna Stamp Company, and had a private expertizing service called the Tribuna Expert Committee. He signed stamps and covers "Tribuna" in pencil.

Besides his wife, Geraldine, Charley is survived by his two sons, Charles, James (Kristin) and his daughter, Nancy Van Fleet; along with his grandchildren, Harrison, Julia, Grant, and Stephanie.

*Spotlight on Books:***MAIL OF THE CZECHOSLOVAK LEGIONS IN FRANCE**

by Jaroslav Verner

This column originated in the Fall issue of *The Specialist* as an effort to help members learn more about the books the Society has for sale, and therefore help them in their collecting efforts and enjoyment of the hobby. Czechoslovak philately has many fascinating areas in which to specialize or concentrate.



For example, there has been some attention to the Czech Legions in Russia. But did you know about the Legions in France during World War I? With this issue I want to spotlight a very informative book about an area of Czechoslovak philately that has had very little written about it.

The book is Mail of the Czechoslovak Legions in France by Jaroslav Verner. Published in 2002 by the Society for Czechoslovak Philately this book is, to my knowledge, the first book written on the subject of the Legions in France during World War I. It is written in both English and Czech.

What makes it valuable to the collector who specializes in this area? First, it is the starting point for anyone wanting to learn about this area of Czechoslovakia. Beautifully illustrated,

the book provides a well written context around which the Legion in France was created, deployed in battle, and aftermath. It illustrates thoroughly how the mail systems were developed and used. Collecting this area is a challenge as the author points out. In fact, it was his frustration with the lack of good philatelic books and articles on the subject that led him to write this book.

This is not a catalog but rather a history of how the formation of the Legions in France played a vital role in gaining Allied support for the creation of a free and independent Czechoslovakia. Along the way, the development of the military postal system in France is explored and amply illustrated. So the multiple illustrations also act as a kind of catalog in that examples of cancels from various units are recreated or shown as a reference. Of particular value to the philatelist, there is also a table which assigns values to various cancels illustrated. Written with the collector in mind, there is a thorough bibliography for further research in the area.

For those who want further information on this book, it was reviewed in *The Specialist* in the January/February 2003 issue. Anyone with an interest in this fascinating area of Czechoslovak philately will want this book in their library. It will certainly add to their enjoyment of collecting this interesting area. The book is available and at \$12 postage paid is well worth it. Please contact me at wellseats@hotmail.com to order.

– James Buckner

Letters to the Editor

1. Good evening Lou,

Greetings from the miserably wet and chilly little English village of Wombourne. So fitting to read the well worded tribute to the late Savoy (Sam) Horvath.

The help Savoy gave me when researching books and his agreement to write a "Forward" for me to Monograph 25 showed the enthusiasm he had in our joint interest of Czechoslovak liberation overprints from 1945.

Whilst I was lost in the translation of Karel Holoubek's (KH) *magnum opus*, Savoy's incisive and often witty comments, coupled with his ability to communicate directly with KH for me was most helpful.

He was a man I will long remember.

– Bob Hill

[Ed. Note: This is just one of a number of letters and e-mails that I received as a result of the three Closed Albums pieces that appeared in the Fall 2015 issue honoring Savoy Horvath, Jay Carrigan, and Valerie Kramer.]

2. Lou:

I just wanted to comment on the GPS letter by Carl Barna.

[Like] . . . Carl, I became a member of GPS 1st, then a member of SCP. Both societies are looking for [a] way to maintain and increase membership and stay financially healthy. GPS did have a rate increase to \$40, but the difference is it's a monthly magazine. I believe the real struggle is finding ways to reach the younger generation.

Stamp collecting for me was introduced in my life at the age of 12 at a Boys Club in 1972. An old man would come once a week and share stamps with the boys who attending. It was through this that I became fascinated with Germany due to the inflation stamps of 1920-23. I collect all German stamps including colonies, occupations and axis countries through 1945. I introduced stamp collecting to my kids when they were young but both lost interest in their teens.

I became a member of both societies in the last 3 years through Chris Jackson. I was drawn to purchasing stamps from Chris because of his detailed descriptions on every item he lists. To me the backstory is just as important as the item listed. That is what makes philately interesting. That is why I enjoy reading SCP [*Specialist*]. Otherwise a stamp is just a stamp! It was through these purchases on Ebay in 2013 that he suggested I go to Westpex in San Francisco for a stamp show (500 miles from my home, but well worth the flight). I never been to a stamp show or club so getting out and meeting others was awesome. I spoke to him briefly at the SCP counter and thanked him for inviting me. That was when I joined GPS. I continued purchase stamps from Chris on Ebay and whenever I had a question he was always there by email to give a detailed answer. It was through his mentoring on areas of Bohemia & Moravia and Slovakia that I joined SCP in 2014. SCP is a great society. I love the magazine. I read it cover to cover. I even purchased the back issues when they were offered a few years back.

It is all our responsibility to bring our passion to the younger generations. Share your hobby with your children, grandchild, neighbors and friends. A stamp is just a stamp unless you share the history behind it. Start a local chapter or become a member if offered. Philately is dying without our effort to instill passion in the younger generation. Become that vehicle for change.

– Bill Capps, #2136

Philatelic News and Views

1. *From Mark Wilson:*

A short time ago I undertook a project to complete stamp albums for a portion of the First Republic, for the new Czech Republic, and eventually (when I am done) for Czechoslovakia from 1945 - 1992. The albums are illustrated with color copies of each stamp.

Because the First Republic offers so many opportunities for specialization, two different albums are available -- one for a general collection and one for a more comprehensive collection. Blank pages are included so that users can make their own pages when necessary or useful.

Specialist readers may view and download printable copies of the albums **free** by going to www.cpslib.org and clicking on **Album** in the upper right part of the website screen. Make sure you are in the English language version of the website since the albums do not appear in the Czech language version.

The website has other uses. For instance, the text on every Czechoslovak and Czech Republic stamp has been translated into English. The website appears to be quite popular world wide and has had over 50,000 visitations from 129 different countries.

[*Ed. Note: I highly recommend that you check out this typical excellent product by Mark. After you click on Album, look for the three subheadings that are right under a heading line, they read: First Republic, Czech Republic, and Album Info. Album Info gives you some information on the albums and recommends how to set up yours. First Republic offers you the two choices of General Collection 1923-1929 or More Comprehensive Collection 1923-1929. I recommend you look at both so you can appreciate how much additional information is provided in the More Comprehensive version, even if you do not use that one. Czech Republic then gives you the three options for an album covering 1993 - 2000, 2001 - 2010, or 2011 - 2015. Have fun with this great tool. As usual, coming from Mark, it is all free.*]

2. *From Ludvik Svoboda:*

Recently our long-time member and current Board Member, John Pojeta, donated a number of books to our Library. The donation consisted of: over 30 different volumes from Mark Wilson's *Hradčany Study Series* and *Chainbreaker* booklets, three bound volumes of *Specialist*, and 3 duplicate-stamps books. The Mark Wilson booklets were of particular need, since the library currently does not have the complete set. Thank you John.

3. *From Ludvik Svoboda:*

Recently Evan Kramer (widower of our recently deceased Board Member, Valerie Kramer) donated over 37 different books from her library to our Library. These books included catalogs, Monografie, translation dictionaries, studies on revenue stamps, history books, and more, many of which are new to the library.

But his greatest donation was her recently developed 430 page book, *Revenue Stamps of Czechoslovakia*. It is without a doubt the leading book in English on this subject in the western world, and possibly also in the Czech Republic in any language. Thank you Evan (and Valerie).

4. *From Ludvik Svoboda:*

As reported in the August 3, 2015 issue of *Linn's Stamp News* by Michael Baadke, a new search function on the website of the American Philatelic Society allows anyone to view images and opinions of stamps submitted for expertization. It can be found at: <http://stamps.org/Certificate-Archive>.

Once there you can search by many options, but if you go to the country listing, you will find Bohemia & Moravia, Czech Foreign Legion, Czechoslovakia/Czech Republic, Eastern Silesia, and Slovakia. You will find a total of about 50 listings for stamps and souvenir sheets that were submitted to the APEX expertization service in the past (2004 - 2009, and 2014 to date, which is being constantly enlarged). As usual you will find them marked as genuine, genuine in all respects, forgery, or no opinion.

Unfortunately there is no indication as to why they were marked as such. I was surprised at how many of the POŠTA overprinted stamps were simply marked as No Opinion when it was pretty obvious to me that they were forgeries.

The site has the advantage that it shows you clear and pretty large images of many stamps that you might be interested in that are marked as genuine, and that you can use as a control image for comparing with yours or ones that you are considering buying. Likewise many of those marked as forgeries (especially with the POŠTA overprinted ones) show you what to look for.

It is a site worth visiting.

5. *From Jan Kypast (trans. by Mark Wilson):*

On January 18, 2016, Frederik Backeljauw from the Belgian town of Schelle died at the age of 70 [*he was a member of our Society for a number of years in the 1980's and 1990's and a continued friend of many of us*]. He was a major collector of Czechoslovak stamps and a great friend of Czechoslovak philately. His specialization was in the Hradcany issues and their use in all of the municipalities of the former Czechoslovakia from 1918 to 1921. In performing this enormous task, which he completed, he utilized both Votoček Monografie 16 and 17. He also actively participated in the completion of Monografie 5 -- SO 1920. He was a long-time subscriber of *Filatelie* and *Merkur Revue*, and to better understand them, he began learning Czech. He was an active member of the Czechoslovak Philatelic Society of Great Britain, the Society for Czechoslovak Philately in the USA, and the societies for Collectors of Czechoslovak Stamps in Germany and the Benelux. He was a great lover of Max Svabinsky and managed to collect signed copies of all the stamps he had designed. He frequently visited Czechoslovakia. As a great lover of nature, he especially enjoyed collecting stamps featuring wildlife. His pleasant and open-minded personality won him many friends around the world. He left us as a great philatelist and wonderful human being.

6. *From Ludvik Svoboda:*

Eliot A. Landau, a well-known Chicago-area philatelic collector, judge, researcher, author and exhibitor, died January 4. He was born in Chicago during WW II. He had a long relationship with the Chicago Philatelic Society, having served as its president and the Chicago bourse chairman. He received numerous recognitions for his philatelic endeavors.

USES OF THE EXPRESS STAMP

by Hans van Dooremalen

At a meeting of the Vereniging voor Tsjechoslowakische-Filatelie, the Dutch Society for Czechoslovak Philately, the question arose as to what actually was the purpose of the express stamps that were issued from 1916 onwards. We see these stamps very often as additional postage on postcards and letters, especially after 1918, but it is clear that they were not issued for this purpose. The domestic express rate in Austria -- without additional carrier fees -- was at that time 30 heller, and the stamps we are talking about here have a face value of two and five heller.

Just which stamps are we talking about? The two and five heller stamps were issued for the first time by the Austrian postal authorities on 1 October 1916. At first this was a triangular stamp. The rectangular



Figure 1



Figure 2: Cover franked with an additional 2 heller express stamp to pay the preferential treatment surcharge and a 3 heller stamp for printed matter up to 50 grams -- a beautiful pure use of the triangular 2 heller express stamp.



Figure 3: Cover franked with an additional 5 heller express stamp which paid for the surcharge and the printed matter rate up to 50 grams. The 25 heller stamp paid the additional registered mail fee.

stamps were issued from May 1917 onwards because the triangular format caused many technical problems. We may well ask, why were these stamps issued?

The First World War had a profound influence on the postal system. Mail to and from soldiers was carried free of charge, and the public took extensive advantage of this benefit. At the same time, the regular mail traffic, especially business correspondence, continued as usual. A situation arose where business correspondence sent as printed matter at a rate of 3 heller per weight step was delivered only when circumstances permitted. Companies began to complain and for this reason a new type of printed matter service was introduced on 1 October 1918: *printed matter with preferential treatment*. This service required the payment of an extra two heller fee. Postal authorities issued a 2 heller stamp to cover the cost of the service alone, and a 5 heller stamp to pay both the printed matter rate and preferential treatment surcharge with a single stamp.

When the postal rates in Austria were increased on 1 October 1918, the postcard rate of 8 heller rose to 10 heller. At that time the post offices still had very large quantities [of] 8 heller postcards on hand. However, because no normal 2 heller stamps existed to make up the difference, postal authorities used the 2 heller newspaper stamps and 2 heller express stamps for this purpose. The postcards were being sold at post office windows with the additional franking already affixed.



Figure 4: Cover franked with a 5 heller express stamp which paid the up to 50 grams printed matter rate and the preferential treatment surcharge.

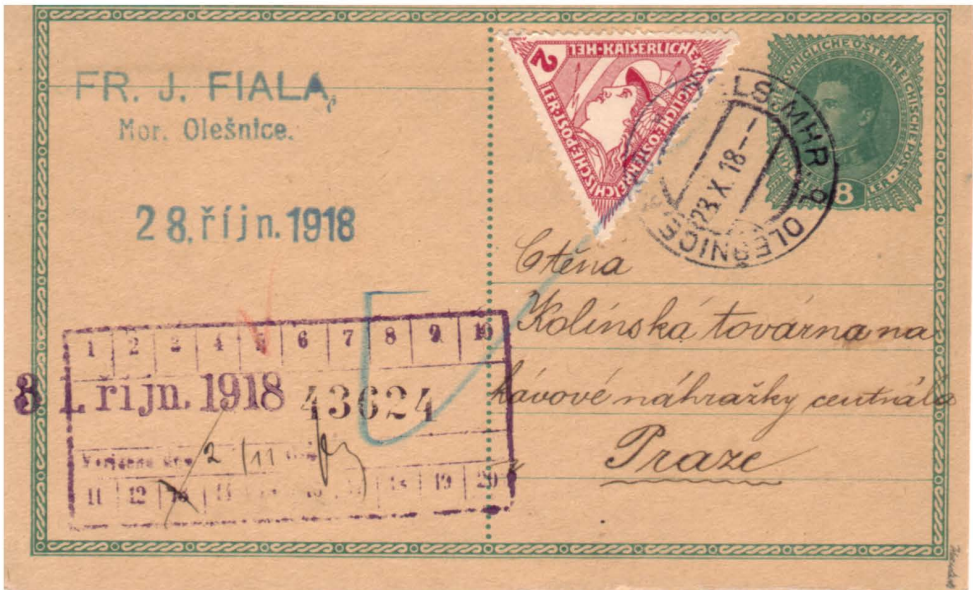


Figure 5: Postcard mailed on Independence Day, 28 October 1918, with a 2 heller express stamp used as additional franking to make up the full postcard rate of 10 heller.

THE CZECHOSLOVAK SPECIALIST

This practice continued after the independence of Czechoslovakia on 28 October 1918.

On 10 February 1919 the Czechoslovak postal authority itself issued express stamps with face values of 2 and 5 haléř, followed on 20 December 1920 by a 10 haléř stamp. Initially the 2 haléř stamps were also used as additional postage on the remaining 8 heller Austrian postcards. (Figure 6).

Of course, we also find these stamps used in their original role as preferential treatment franking.



Figure 6:

The surcharge was increased to 5 haléř on 15 March 1920. The preferential treatment surcharge again increased on 1 August 1920, this time to 10 haléř. A separate stamp was issued for the 10 heller [sic] rate in 1920. Covers or postcards



Figure 7: 8 heller Austrian postcard with additional 2 haléř Czechoslovak express stamp to meet the 10 haléř postcard rate.



Figure 8: 8 heller Austrian postcard at first affixed with an additional 2 heller Austrian express stamp to meet the 10 haléř postcard rate. Austrian stamps became invalid on 28 February 1919 requiring its replacement with a 2 haléř Czechoslovak stamp.



Figure 9: 2 haléř express stamp paying the preferential treatment surcharge, with a 3 haléř Hradčany paying the printed matter rate up to 50 grams -- valid until 14 May 1919.



Figure 10: After 15 May 1918, the printed matter rate up to 50 grams became 5 haléř, paid here with a 5 haléř Hradčany stamp. The preferential treatment surcharge was paid with a 2 haléř express stamp.

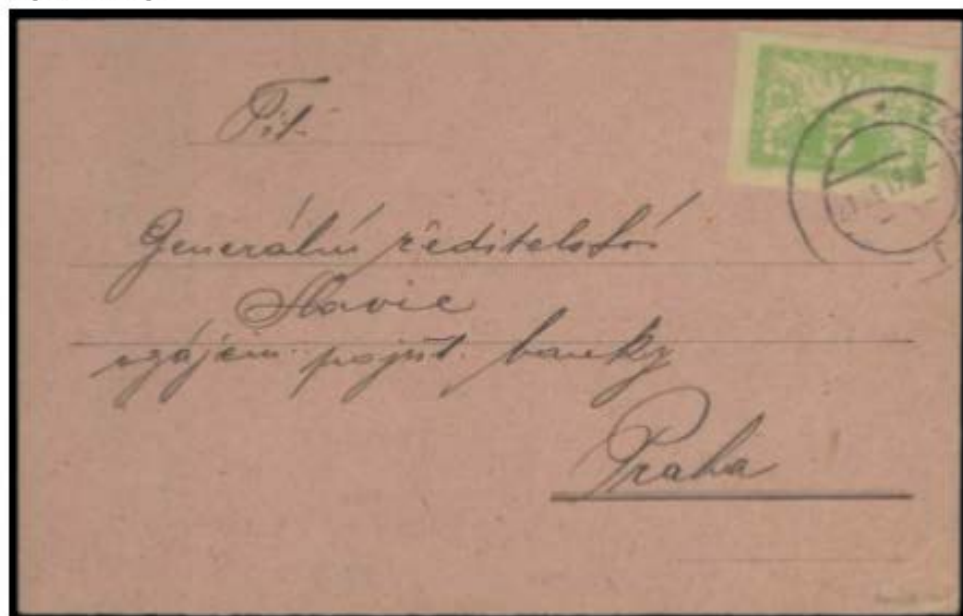


Figure 11: 5 haléř paying not the preferential treatment surcharge but rather applied as a single franking for printed matter up to 50 grams.



Figure 12: Printed matter from the ninth weight step (180 haléř), registered (125 haléř), bringing the total to 305 haléř. The additional 10 haléř express stamp paid the preferential treatment surcharge.

from this period are quite scarce and have appeared only rarely on the market in recent years.

With the rate change of 1 January 1922, the express surcharge for printed matter was abolished. However, the stamps continued to be used for a considerable period afterwards for unauthorized uses as they were not withdrawn until 31 July 1924! The remainders were then overprinted and used as newspaper stamps (1 March 1926 until 15 August 1928).

*This article was originally published in the Dutch society's journal *Nieuws over ons verzamelgebied*. A German version will appear this month in the German society's journal *Forschungsberichte*.*

[Ed. Note: The Specialist is pleased to reprint this article from the March 2015 Czechout with permission of the author and editor.]

ROCKY MOUNTAIN STAMP SHOW (RMSS 2016) WORLD STAMP SHOW – NY 2016 (WSS-NY 2016)

RMSS 2016

Our annual convention this year is being held in conjunction with RMSS 2016 from May 13 - 15 at the Crowne Plaza Hotel (Denver International Airport), 15500 E. 40th Ave., Denver, CO.

The special show rate is \$102 plus taxes, and if you want the buffet breakfast included, add \$5 per person. These rates are available May 9-19, 2016, so come early or stay late and see some of beautiful Colorado. Call the reservation office at 303-371-9494 (800-423-0809), and mention the RMSS rate, and ask about their shuttle service from the airport.

The show's website can be found at: www.rockymountainstampshow.com. The show hours are 10 AM - 6 PM on Friday and Saturday, and 10 AM - 3 PM on Sunday. Admission costs are \$2 per day, or \$5 for the three days. Parking is free. Youths are free when accompanied by an adult, and they do have an extensive Youth Area called "Stamp Camp, Denver". They will have a number of our free items for youths interested in Czechoslovak philately, and we will have our members available to answer any questions you or they may have.

Our planned activities include our Board of Directors meeting the day before (Thursday, May 12, 1 PM at the show hotel) which all members are invited to attend. It will be followed by a Society dinner that evening at the Golden Europe restaurant (Czech, German, and Polish food cooked by "babicka" and served by her family, and plenty of Czech beer).

Please come by our Society table to introduce yourself, to meet our members, and to get the latest information on where and when Society activities will take place. We are always available to answer questions about Czechoslovak philately; there will be a number of exhibits to view related to Czechoslovak philately which you can see on your own or during a guided tour; we will have a great selection of our books available for you to review and purchase; and a tour is planned of our SCP Library at the Rocky Mountain Philatelic Library.

On Saturday afternoon we will have our Society general meeting in the hotel followed by presentations on Czechoslovak philately.

And finally, there will be a Society awards breakfast at the hotel on Sunday morning.

WSS-NY 2016

The World Stamp Show - NY 2016 is a once-in-a-decade international stamp show that is being held May 28 through June 4, 2016 at the Javits Center in New York City. Admission is free. Show hours are basically 10 - 6 with small variations on the opening and closing days. Their website is: www.ny2016.org.

The Society for Czechoslovak Philately has arranged to have a booth (#1650) throughout the show to advertise our Society, to answer questions about Czechoslovak philately, and to be a focus for attendees with an interest in Czechoslovak/Czech/Slovak stamps. We are not planning any scheduled events however. We are expecting a number of collectors from Europe to be attending.

So check out the website for a wealth of information, and stop by to visit with us.

New Issues**CZECH REPUBLIC**
by Ludvik Svoboda**2016 ISSUE PLAN FOR CZECH REPUBLIC STAMPS**

<u>Date of Issue</u>	<u>Name of Issue</u>	<u>Number in set</u>	<u>Value Kč</u>
Jan 20	Tradition, Czech Stamp Design - Karel Svolinský (1896-1986)	1	13
Jan 20	Personalities: Jerome of Prague	1	17
Feb 3	Puppies - Czech National Breeds of Dogs: Czech Spotted Dog	1	13
Feb 17	Historical Vehicles -- "Slovak Missile"	2	13
	-- Paddle Steamer Vyšehrad		13
Mar 16	Personalities: Tomáš Bata (1876-1932)	1	13
Mar 16	Technical Monuments: 125 years of the Petřín Observation Tower, 125 years of the Petřín Funicular	1	13
Mar 16	60 Years of the Joint Institute for Nuclear Research in Dubna	1	27
Apr 6	Beauties of Our Country -- Buchlov Castle	1	17
Apr 6	Floristry: Wedding Flower Arrangement	1	13
May 4	EUROPA -- Thinking Green	1	25
May 4	Czech/Slovak Philatelic Exhibition in Žďár nad Sázavou	1	13
May 4	Charles IV	1	50
May 18	Prague Castle -- Lucas Cranach	1	34
May 18	150 th Anniversary of Opening Night of Bartered Bride	1	13
Jun 22	Strážnice -- International Folklore Festival	1	21
Jun 22	XXXI st Olympic Games, Rio 2016	1	50
Jun 22	Summer Paralympic Games in Rio 2016	1	13
Jun 22	Jan Jesenius -- Joint Czech-Slovak- Polish-Hungarian Issue	1	41
Sep 7	Nature Protection: Zoological Gardens I.	4 s/s	13,17 21,25
Sep 7	Personalities: Prof. RNDr. Antonín Holý (1936-2012)	1	50
Sep 7	Gerrit Dou -- Young Woman on a Balcony, Joint Czech- Liechtenstein Issue	1	25
Sep 22	Historical Vehicles -- The Tatra 87 Car	2	25
	-- The Aero A.11 Biplane		25
Oct 12	Železné Hory Protected Landscape Area	1	13
Oct 12	1916 Fight for Czech Statehood	1	27
Nov 9	70 Years of UNESCO	1	25
Nov 9	Work of Art on Stamps -- Jaroslav Král (1883-1942)	3	27
	-- Bedřich Štefan (1896-1982)		30
	-- František Tichý (1896-1961)		34

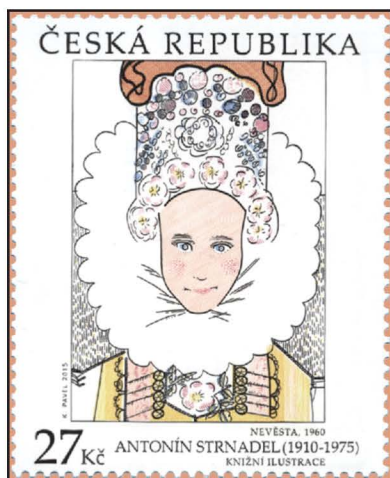


Fig. 1

1. On December 16, 2015, the Ministry of Industry and trade of the Czech Republic issued a set of three commemorative stamps in the Art on Stamps series. The stamps were produced by the Post Printing House in Prague by recess print from flat plates in printing sheets of 4 pieces.

-- 27 Kč: Antonín Strnadel (1910-1975), "The Girl in Folk Costume, 1960" (Fig. 1), a book illustration, engraved by Pavel Kovářík; in ocher, yellow, red, blue, and black. Antonín Strnadel was a prominent Czech painter, graphic artist and illustrator. He came from the family of a logger and forest clearing worker in Trojanovice. He began by painting and coloring photographs and postcards as an assistance in the book shop owned by the

Parmas. In 1927-1933, he studied with J. Benda at the School of Applied Arts in Prague, and then for three years he studied with Professor M Švabinský at the Academy of Fine Arts in Prague. After WW II, he worked at the School of Applied Arts in Prague, and became an important representative of Czech illustration. Illustrations are the center of gravity of his work. His paintings drew from the folklore of his native Wallachia region. As a painter, he captured a large number of Wallachian folk buildings and their interiors, furniture, tools of shepherds and their life in the hut. Historically, valuable cottage No. 451 in the center of the village of Nový Hrozenkov serves as a memorial to Antonín Strnadel, who used it as his studio in 1935-1936. In 1967, he was awarded the title of National Artist. He is buried at the Slavín cemetery in Prague's Vyšehrad. A FDC in black shows an original drawing from the author's estate -- men in costumes (Fig. 2).

-- 30 Kč: Bohumír Matal (1922-1988), "The Sitting, 1957" (Fig. 3), in the Gallery of fine Art in Ostrava, engraved by Václav Fajt; in yellow, red, blue, and red-brown. Bohumír Matal was a Czech painter and a significant representative of post-war painting. He was born in Brno and died in Prudká at Doubravník. In 1937-1941, he studied at the School of arts and Crafts in Brno. In 1941, he was arrested for anti-fascist activi-

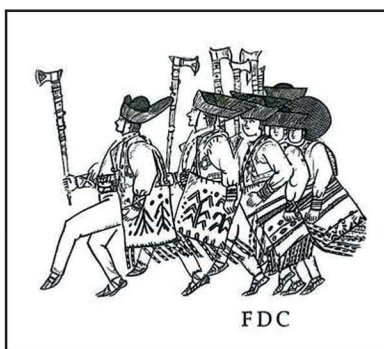


Fig. 2

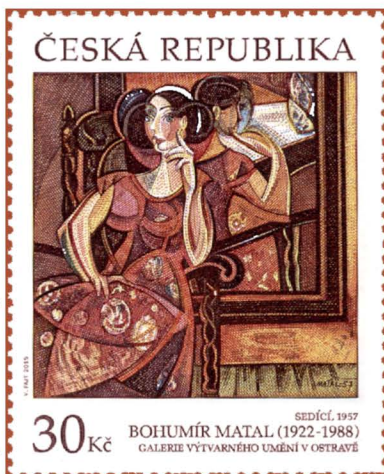


Fig. 3

ties and was taken to the camp in Lohbruck near Breslau, where he worked in a chain-making factory. Although he could not paint anymore, he sent letters to his family accompanied with illustrations -- in fact sending more than 200 letters with pencil illustrations. In 1946, he returned from Germany and started painting again, and had several exhibitions. His most common themes were people and the city, civilization and industrialization (e.g., cement plants, paper mills), with his first paintings containing themes such as airships, ports, and streets in the rain. In the 1960's, experiment and abstraction appeared in his works. After 1968, he moved to Prudká at Doubravník, where he purchased a flour mill and converted it into a studio where he lived until his death.

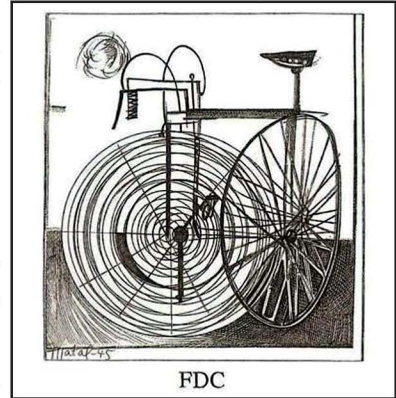


Fig. 4



Fig. 5

parts of bicycles and other materials -- that made him famous. His sculptures, looking like skinned creatures with visible veins, arteries, tendons, and muscles, were made of diverse plumbing materials, but also from ladies' stockings covered with acetone paint. Only later he began to build his sculptures from carefully arranged iron castings. His very distinctive equestrian statue of Czech writer Jaroslav Hašek is an open-air work displayed in Prokopovo Square in Prague's Žižkov district; Nepraš died before finishing the statue. In 1991, he was appointed a professor at the Academy of Fine Arts. Thanks to his distinctive works, Karel Nepraš belongs to the pioneers of Czech modern art. A FDC in

dark-brown shows his picture "Bicycle (1945)" (Fig. 4).

-- 34 Kč: Karel Nepraš (1932-2002), "The Great Dialogue, 1966" (Fig. 5), in the National Gallery in Prague, engraved by Martin Srb; in full-colored offset and black steel. Karel Nepraš was a significant Czech sculptor, draftsman, graphic artist, and professor at the Academy of Fine Arts in Prague. He was born and died in Prague. In 1952, he enrolled at the Academy of Fine Arts in the sculpture studio of Prof. J. Lauda. It was his sculptures -- special red creatures bursting with irony and sarcasm, made of metal pipes, hoses, screws,

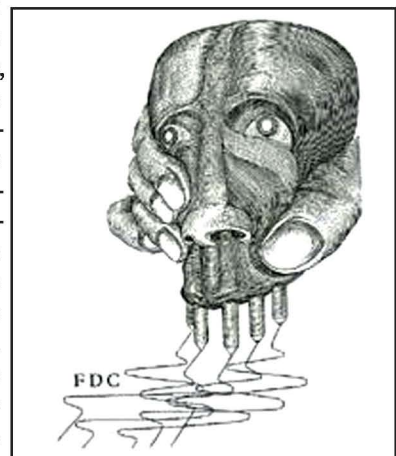


Fig. 6



Fig. 7

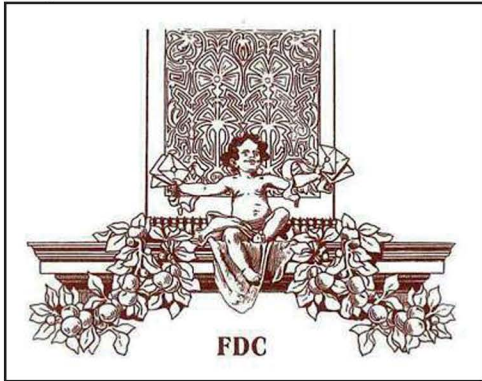


Fig. 8

Pavel Hron, and Michaela Petrusová. The stamp is produced by the Post Printing House in Prague by full-colored offset. A FDC in brown depicts a detail of a child with letters depicted by a mural in the main hall (Fig. 8).

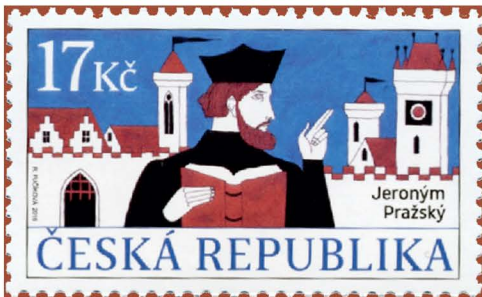


Fig. 9

3. On January 20, 2016, the Ministry issued a 17 Kč commemorative stamp in the Personalities Series honoring Jerome of Prague (Fig. 9). On the stamp is a portrait of Jerome of Prague -- towers and gates are a stylized rendition of high-level medieval European development and diversity, and a symbol of the great spiritual richness to which Jerome of Prague clearly belonged. Jerome of Prague (1378-80, Prague -- May 30, 1416, Constance) was a Czech philosopher and theologian who was burned in 1416 in Constance. Jerome came from Prague's New Town. As a student at the University of Prague, he came under the influence of Czech theological reformer Jan Hus. After obtaining his bachelor's degree in 1398, he continued his studies at Oxford and adopted the philosophical theology of English reformer John Wycliffe. He returned to Prague and, as a university professor, began spreading Wycliffe's teaching. He obtained a master's degree from four universities -- Paris, Heidelberg, Cologne, Prague. In 1403 he visited Palestine and Jerusalem. In 1407 he taught

black shows the picture "Color Drawing (1981)" (Fig. 6).

2. On December 16, 2015, the Ministry issued a definitive stamp with labels for additional printings and with imprinted letter "Z" (Fig. 7). The stamp shows a detail of a postman from the past that is portrayed on a mural in the main hall of the Post Office in Jindřišská street. The stamp is issued in arranged printing sheets with 9 stamps and 12 labels. On the date of issue, the 6 side coupons in the left- and right-hand sides of the arranged printing sheet contain a detail of a statue depicted by a mural in the main hall. The 6 middle coupons feature alternately a detail of a lady with a letter and a detail of a gentleman with a letter portrayed by murals in the main hall. A part of the sheets will be issued with blank labels for additional printings in accordance with the wish of the customer. The authors of the photos and graphic arrangement are Petr Hron,

theology at the University of Prague. In 1410 he again visited Vienna, where he was imprisoned and accused of heresy but managed to escape. Two years later, he was involved in the public protests against indulgences in Prague. In 1413, he went to Russia and Lithuania to learn more about the specifics of the Orthodox liturgy. He also visited the Polish lands. He was persecuted as a supporter of Wycliffe and Jan Hus. Like the latter, he attended the Council of Constance, where he was imprisoned in May 1415 and put on trial. He was burned at the stake at the same place as Hus had been less than a year before. The stamp was designed by Renáta Fučíková,

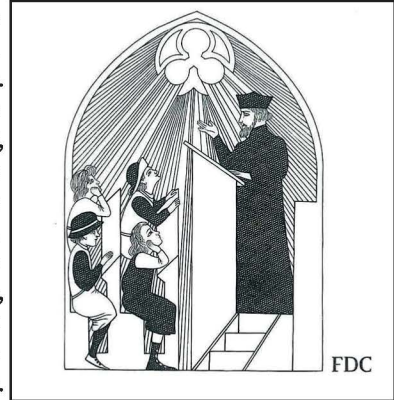


Fig. 10

engraved by Bohumil Šneider, and produced by the Post Printing House in Prague by multicolored offset in printing sheets of 50 pieces. A FDC in black depicts the atmosphere at the university where Jerome is giving a lecture to students and asking them stimulating questions. He is shown illuminated with light from above, an image of the seeking of truth. Like Jerome's opinions clashing against the wall of medieval dogma, which cost him his life, the light breaks through the Gothic window and disperses (Fig. 10).



Fig. 11

4. On January 20, 2015, the Ministry issued a 13 Kč commemorative stamp in the Tradition of Czech Stamp Design series honoring the painter, graphic artist, and stamp designer Karel Svoboda (Fig. 11). The stamp shows his portrait based on a photograph (made by Tomáš Vosolobě) provided by the Postal Museum; the stamp also includes a collage of fragments from book illustrations and a postage stamp. Karel Svoboda (1896-1986) was a leading Czech painter, graphic artist, illustrator, typographer

and letter designer, stage designer, and university teacher. Beginning his training as a carver, in 1919 he attended the Academy of Arts, Architecture and Design in Prague studying painting, graphic design, and sculpting. After suffering an injury, he focused mainly on graphic design and murals from 1922-1927. Beginning 1945, he was the head of the Special Department of Applied Graphic Art at the Academy. The focus of his work was on drawing that was inspired by folk traditions, costumes, and nature. Other areas of his work included graphic design (book plates, posters, banknotes, stamps) using experimental graphic techniques. He was: an outstanding book designer/illustrator, designed tapestries, and a successful stage designer. He is best known as the designer of several monumental works: the stained-glass

THE CZECHOSLOVAK SPECIALIST

window of the Schwarzenberg chapel in St. Vitus Cathedral in Prague and a new design of the Astronomical Clock in Olomouc in the style of socialist realism. He also designed the covers for musical scores by Bedřich Smetana, Leoš Janáček, and Zdeněk Fibich. From 1935, Svolinský was a member of the association of artists “Mánes” and an honorary member of the association of Czech graphic artists “Hollar”. The stamp is designed by Zdeněk Netopil and produced by the Post Printing House in Prague by full-colored offset in printing sheets of 50 pieces. Besides the stamps in sheet arrangement, also philatelic booklets of 8 stamps and 4 coupons are issued. The coupon includes a collage of fragments from book illustrations (Czech



Fig. 12

Year, Plants) and postage stamp (Moravia -- Těšinsko Region). A FDC in black features a bleached and hardened fragment of the stamp Slovácko Region showing a woman in native Kroj dress, with a collage of bird motifs (fragments from his illustrations from around 1966) (Fig. 12).

ADVERTISING RATES FOR THE SPECIALIST

Amount of Space	One Issue	Two Issues	Four Issues
Back cover page	50	85	150
Full Page	35	55	105
Half Page	20	32	60
Quarter Page	12	20	36
Eighth Page	8	13	24

1. All amounts are total cost. Payment must accompany the ad. Make check out to “Society for Czechoslovak Philately” or “SCP”. Ads will not be placed until they are paid for. Members are entitled to a 15% discount, if they ask for it.
2. The actual size of a full page advertisement is 5 inches by 8 inches.
3. The back cover page must be purchased as a whole -- no partial pages.
4. Submit your advertisement copy double-spaced and typed, or legibly printed.
5. it is the advertiser's responsibility that the copy be correct since the advertisement will be printed exactly as it is received, in other words “as is”.
We reserve the right to correct spelling and grammatical mistakes.
6. Send copy and payment to: Ludvik Svoboda, 4766 S. Helena Way, Aurora, CO 80015

New Issues

SLOVAKIA
by Ludvik Svoboda

2016 ISSUE PLAN FOR SLOVAK REPUBLIC STAMPS

<u>Date of Issue</u>	<u>Name of Issue</u>	<u>Number in set</u>	<u>Value €</u>
Jan 25	25 th Anniversary, Foundation of Police Forces, Slovak Rep.	1	T1.50g
Jan 27	European Figure Skating Championship, Bratislava	1	0.90
Feb 10	Cultural Heritage of Slovakia: Trenčianské Teplice	1	1.60
Feb 26	Easter 2016: Paličkova Lace	1	0.45
Mar 10	Personalities: Matej Hrebenda (1796 - 1880)	1	0.65
Apr 15	Technical Monuments: Steam Locomotive Umrath (1894)	1	1.15
May 5	EUROPA 2016: Ecology in Europe -- Think Green!	1	0.90
Jun 3	Postage Stamp with Personalized Coupon -- Philately	1	T2.50g
Jun 22	450 th Anniversary of Birth of Ján Jesenius (1566 - 1621)	1	0.90
Jul 1	Presidency of Slovak Republic in Council of the EU	1	1.40
Jul 8	XXXI Summer Olympic Games in Rio de Janeiro	1	1.00
Jul 8	XV Summer Paralympic Games in Rio de Janeiro	1	1.00
Jul 23	101 st World Congress of Esperanto	1	1.20
Sep 19	Beauties of Our Homeland: Geyser of Herľany	1	0.80
Oct 7	Nature Protection: Súr National Nature Reserve by Svätý Jur	3	
	-- Gum Alder (<i>Alnus Glutinosa</i>)		0.65
	-- Hard Alder (<i>Frangula Alnus</i>)		0.65
	-- Spiny Fern (<i>Dryopteris Carthusiana</i>)		0.65
Oct 24	Art on Stamps	2	
	-- Ester Simerová-Martinceková (1909 - 2005)		1.30
	-- Mária Bartušová (1936 - 1996)		1.30
Nov 11	Christmas Post 2016	1	T2.50g
Nov 14	Christmas 2016: Paličkova Lace	1	0.45
Nov 18	Personalities: 100 th Anniv., Birth of František Dibarbora	1	0.70
Dec 4	Postage Stamp Day: Piešťany 1 Post Office Building	1	0.65

5. On November 25, 2015, the Ministry of Transport, Posts, and Telecommunications issued a 1.50€ commemorative stamp in the Art series for Dušan Samuel Jurkovič (1868-1947) -- House of Culture in Skalica. The building of the House of Culture (originally the House of the "Circle" Catholic Society, originally built as a multi-functional building for the Catholic Circle, The Society of St. Vincent and Farmers' Association) was designed by the architect, Dušan Jurkovič, in 1904. It consisted of trade and society rooms, a theater hall, museum, reading room, warehouses, and related facilities. On the building, different parts can be distinguished by the signs; mosaic decoration can be found between the ground floor and the first floor; figural motifs on the gable are based on the designs of the renowned Czech painter, Mikoláš Aleš. The most dominant part of the building is the big hall, originally a theater hall, typical of the works of Dušan Jurkovič. A wooden column



Fig. 13

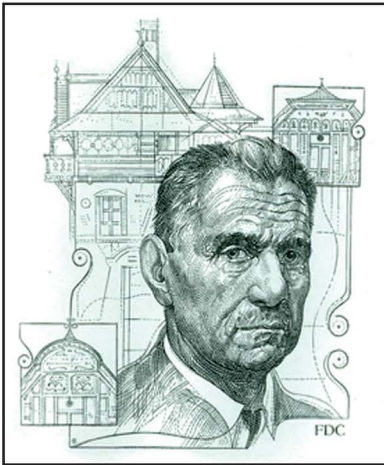


Fig. 14

and his attempt to create a national “Slovak style” based on Art Nouveau. The stamp and miniature sheet (Fig. 13) were designed by Rudolf Cigánik and produced by the Postal Printing House of Securities, Prague, using recess printing from flat plates combined with offset. A FDC shows a portrait of Jurkovič against a background of his drawings (Fig. 14).

structure divides the space, while the columns also create an arch supporting the truss structure giving an unobstructed view. Wider spaces between the supports in the upper part form window arches, diffusing the incoming light. Bright walls along the hall and over the gallery entrance feature figural depictions of folk motifs based on the works of the renowned Moravian painter, Joža Úrka. Jurkovič also depicted as an illusion a two-dimensional folk house with a hall and room with a column in the center. Decorated exhibition cases and shelves display a jug pottery collection that creates the effect of folk furniture. This building represents a combination of the elements of the period Art Nouveau style inspired by folk construction, and is a design typical of the architect, Dušan Jurkovič,



SLOVENSKO

MALBA Z HOTELA THERMIA PALACE V PIEŠTANOCH, 1932

1,20€

BUĎ POZDRAVENÝ POŽEHNANÝ PRÁMEŇ ZDRAVIA
ALFONS MUCHA (1860 - 1939)

SLOVENSKO

MALBA Z HOTELA THERMIA PALACE V PIEŠTANOCH, 1932

1,20€

BUĎ POZDRAVENÝ POŽEHNANÝ PRÁMEŇ ZDRAVIA
ALFONS MUCHA (1860 - 1939)

SLOVENSKO

MALBA Z HOTELA THERMIA PALACE V PIEŠTANOCH, 1932

1,20€

BUĎ POZDRAVENÝ POŽEHNANÝ PRÁMEŇ ZDRAVIA
ALFONS MUCHA (1860 - 1939)

SLOVENSKO

MALBA Z HOTELA THERMIA PALACE V PIEŠTANOCH, 1932

1,20€

BUĎ POZDRAVENÝ POŽEHNANÝ PRÁMEŇ ZDRAVIA
ALFONS MUCHA (1860 - 1939)

Fig. 15

6. On November 25, 2015, the Ministry issued a 1.20€ commemorative stamp in the Art series for Alfons Mucha (1860-1939) -- Painting from Hotel Thermia Palace in Piešťany. Alfons Mucha, a famous Czech painter, graphic artist and illustrator, is the author of the painting hanging in the niche above the entrance door of the restaurant in the luxurious Hotel thermia Palace in Piešťany. In the painting, a recovering girl -- presumably Mucha's daughter -- is seated in a rocking chair. Another girl, wearing a wreath of flowers, has her head and arms on the sitting girl's knees. The woman standing is bringing a basket with fruit in one hand and a rose in the other -- symbolic gifts for the sitting young woman. Both the girl and the woman are wearing the folk costume of Piešťany. Considering the churches in the background, the location is obviously the village of Moravany nad Váhom. The painting has been perceived as Mucha's tribute and appreciation of the healing spring of Piešťany. This concept is reflected in the name of the painting: "Salutis fons benedicta ave", which means "Hail to You, Blessed Source of Health". Mucha, his wife, and daughter visited Piešťany several times and underwent medical treatment as well. The painting was unveiled in 1932 and may be the only Mucha painting depicting a Slovak theme. As a twist of fate, while the painting was stolen in 2000 and a buyer offered 15,000\$ for it, the police and Interpol recovered it, and it was returned to its original place on December 20, 2006. The stamps and miniature sheet (Fig. 15) were designed by František Horniak and produced by the Postal Printing House of Securities, Prague, using recess printing from flat plate combined with offset. A FDC shows a part of the painting where the girl is resting on the sitting girl's knees (Fig. 16).



Fig. 16

7. On December 4, 2015, the Ministry issued a 0.65€ commemorative stamp in the Postage Stamp Day series honoring the Bratislava 1 Post Office Building. The Bratislava 1 Post Office building, also called the Main Post Office and known as the post office palace, was built between the years of 1909-1912 on the site of the



Fig. 17

former Hungarian Royal Post Office Headquarters which had its seat in a late baroque palace. Gyula Pártos (1845-1916), an architect from Budapest was the winner of an architectural design competition for the building. He used the sloped terrain to provide separate convenient patron and postal carriage/bicycle access. The main postal hall had a separate entrance that was spanned by an oval glass dome with painted decoration and was one of the most beautiful interiors in the city [*seen in the stamp*]. During 1928-1930, the building was extended by the addition of a story and a new wing, however this did compromise the original design. Then in the 1990's, additional reconstructions took place which affected the artistic and craft decorations. The Bratislava 1 Post Office Building has been serving postmen and customers' needs for 103 years. The stamp was designed and engraved by Martin Činovský and produced by the Postal Printing House of Securities, Prague, using rotary recess printing combined



Fig. 18

with gravure in printing sheets containing 30 stamps and 40 coupons (20 each of two different coupons). Each stamp is flanked by a coupon view of the original building and by a coupon view of the remodeled building with an additional floor (Fig. 17). A FDC shows the main customer entrance (Fig. 18).



Fig. 19

8. On January 25, 2016, the Ministry issued a T1 50g denominated commemorative stamp for the 25th Anniversary of the Foundation of Police Forces of the Slovak Republic (Fig. 19). The historical origins of the Police Force of the Slovak Republic can be found in 1918, when -- after the collapse of Austria-Hungary -- the new state of Czechoslovakia was established from part of its territory. The new state adopted the original state administration and legal systems. In practice it meant the laws defining the scope and performance of the security service between the state police and gendarmes remained valid for the new territory of Slovakia. The political and

social changes after World War II resulted in numerous changes to the security services. The Police Force of the Slovak Republic originated on January 25, 1991. Following the split of the Czech and Slovak Federated Republics, the scope and responsibilities of the Force were revised to accommodate the new federal taskings. The Police Force is accountable to the Minister of the Interior. As a modern armed



Fig. 20

security force, it fulfills tasks related to internal order, security, and the fight against crime, as well as those resulting from the international commitments of the Slovak Republic. The stamp was designed by Adrian Ferda and produced by the Postal Printing House of Securities, Prague, by offset in printing sheets of 50 pieces. A FDC shows the Slovak national emblem behind a chain-linked fence (Fig. 20).

9. On January 27, 2016, the Ministry issued a 0.90€ commemorative stamp for the European Figure Skating Championship in Bratislava (Fig. 21). This stamp portrays the beauty of movement of a figure skater and symbolizes the specific character of this aesthetic sport. Figure skating is not only a sport

but also a specific type of sporting artistry, where the figure skaters become the main characters of a sporting dramatic work. Every pirouette and jump, accompanied by a catchy melody, make the movements, the laws of physics, and gracefulness and beauty meet on the ice in a story that provides a powerful emotional experience. Figure skating is one of the oldest sports that has been performed in Slovakia and is among the most successful. The 145th anniversary of figure skating in Slovakia will be commemorated in 2016 when the Championships will be held here. The Bratislava Figure Skating club was founded in 1871 and was the keystone of the abundant and famous history of figure skating



Fig. 21

in Slovakia. Since the establishment of the Slovak Republic in 1993, the European Figure Skating Championships are being held here for the second time. The stamps was designed by Marianna Žálec Varcholová and produced by the Postal Printing House of Securities, Prague, using offset in printing sheets of 50 pieces. A FDC shows a skating couple (Fig. 22).

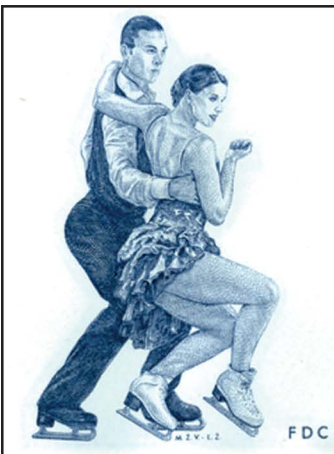


Fig. 22

10. On February 10, 2016, the Ministry issued a 1.60€ definitive stamp in the Cultural Heritage of Slovakia series for Trenčianské Teplice (Fig. 23). In Slovakia, there are not many architectural works of art which can connect nature with a manmade functional structure in a natural way. The Summer Swimming Pool "Zelená Žaba" (green frog) in



Fig. 23

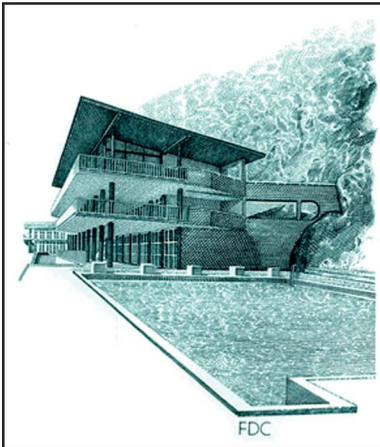


Fig. 24



Fig. 25

Trenčianské Teplice is undoubtedly one such work. The architect Bohuslav Fuchs (1895-1972), from Brno, managed to create such a work of art. In the 1930's, the spa town of Trenčianské Teplice was experiencing one of its golden periods, and thus the directorate of the spa agreed to Fuchs futuristic proposal for the expansion of the spa. His design placed the spa on a sunny slope above the city. In the spirit of new functional and hygiene demands, Fuchs designed a swimming pool with an airy and luminous terrace-like area. It included a scenic restaurant with movable glass walls that allow the connection of the interior with the nature outside. He introduced a diversity of shapes and colors to the swimming pool. Curved staircases and terraces, the contrast of rich colors and natural materials make this swimming pool a top-level architectural structure which serves both the physical as well as artistic needs of the public. The stamp was designed by Peter Augustovič and produced by the Postal Printing House of Securities, Prague, using rotary recess printing combined with gravure in printing sheets of 100 pieces. A FDC shows the building and its pool (Fig. 24)

11. On February 26, 2016, the Ministry issued a 0.45€ commemorative stamp for Easter 2016 entitled Bobbin Lace (Fig. 25). The Christian holiday of Easter, which commemorates the crucifixion and resurrection of Jesus Christ, has been associated with a lot of customs related to the arrival of spring. They originate in the times when the Slavic ancestors of Slovaks were not yet Christians, and they worshiped nature. The custom of washing oneself or splashing others with fresh water stemmed from a belief in the ability of water to purify, to give people health, and to protect them from sickness. The power of awakening nature was supposed to be transferred to man through whipping with fresh twigs. The egg was a universal symbol of the renewal of life. The egg is still present in the Easter holiday in the form of egg dishes and decorated Easter eggs. Puppies, bunnies, goslings, and chicks -- there are also symbols of the awakening of nature. They can be found on post cards, in advertisements, or in the form of

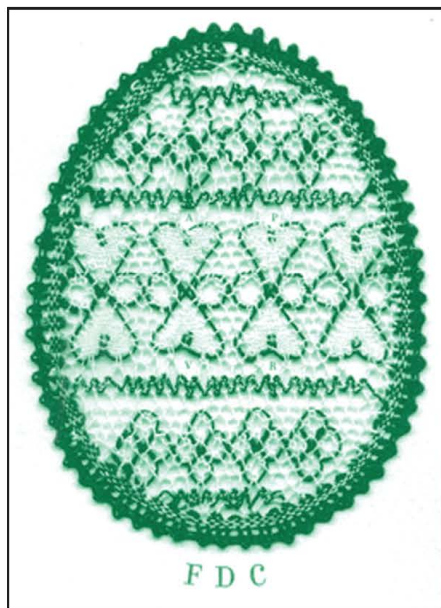


Fig. 26

decorations which people hang in their homes. In Slovakia, bobbin lacemaking of Easter decorations started about the early 1990's. The weaving of Easter decorations is mostly inspired by Slovak traditional laces which are uniquely colorful. Colorful bobbin folk lacemaking began in Slovakia at the turn of the 20th century in eighteen local or regional types. Since then the lace has been woven harmonizing its colors with embroidery on a single piece of textile. An example of the new uses of traditional bobbin lacemaking is the motif of the Easter chick on the postage stamp. This issue of a postage stamp was based on competition among contemporary Slovak Bobbin Lace societies. The stamp was designed by Vladislav Rostoka and produced by the Postal Printing House of Securities, Prague, using offset in printing sheets of 50 pieces. A FDC shows an egg with embroidered cover (Fig. 26).

SELL - SWAP - WANT

Once again I am reminding members about a feature column that used to be a staple of the SPECIALIST many years ago (in the 1970's). I am hoping that it will help members find philatelic items that they need or to sell/swap those that they have in excess – AND, it is all free! Every member is entitled to one FREE 15 word ad each calendar year which will run in the column headed the way this one is. Your name, address, and other contact information does not count towards the 15 words. Send your ad (please type or print it so there are no misunderstandings) to me at the address or e-mail address found on page two of every issue.

EXAMPLES of ads are:

WANTED: Buy International Reply Coupons all countries. L. Svoboda, 4766 S. Helena Way, Aurora, CO 80015

SELL: Hard cover bound copies of 1951-53 issues of SPECIALIST, \$15 postpaid. L. Svoboda, 4766 S. Helena Way, Aurora, CO 80015

SWAP: Interested in Hradcany perf/imperf sheets, covers, freaks, anything -- especially 25h blue. L. Svoboda, 4766 S. Helena Way, Aurora, CO 80015

AVAILABLE PUBLICATIONS

**CONTACT THE BOOK STORE BEFORE ORDERING AS SOME PUBLICATIONS
MIGHT BE SOLD OUT, AND NOT SURE IF ABLE TO RESTOCK**

Prices are postpaid in USA

(E=English,Cz=Czech,Sl=Slovak,G=German, H=Hungarian)

<u>[NEW]</u> 2015 CZECHOSLOVAKIA 1993-2015 (Cz) – POFIS, 266 pages of color with specialized information on all issues.	\$24.00
<u>[NEW]</u> 2015 CZECHOSLOVAKIA 1918-1939 (Cz) – POFIS, 232 pages of color specialized in department information, with many upward price changes.	\$30.00
<u>[NEW]</u> 2015 CZECHOSLOVAKIA 1945-1992 (Cz) – POFIS, 312 pages of color, specialized information on all issues.	\$30.00
<u>[NEW]</u> 2013 PROTECTORATE BOHEMIA & MORAVIA 1939-1945 (Cz) -- POFIS, 208 pages of color, specialized information on all issues.	\$30.00
<u>[NEW]</u> CZECH GRAPHICS UNION – TYPOGRAPHIC PLATE PRODUCTION TECHNOLOGY/PRACTICES AS REVEALED BY THE FIRST REPUBLIC STAMPS (E) – Mark Wilson. How the first stamps were produced, very thoroughly illustrated. A must.	\$ 7.00
OCELOTISK Z PLOCHÝCH DESEK (Vol. 3), 1961-1968 (Cz) -- Stamps and S/S produced by engraving (intaglio), showing plate faults, + blue print.	\$30.00
HRADČANY 25H VIOLET (Cz) – Merkur-Revue, 71 page study of every possible variety of combinations of the spirals, partitions, and arch types on the 1 st and 2 nd printing plates of the 25h value.	\$19.00
WEIPERT FALZUM – FORGERIES FROM VEJPRTY (Cz,G,E) – Merkur-Revue, color documentary of the forged Hradčany issues. The forgeries were created in 1919 Germany, delivered to the Czech border town of Vejprty north of Karlovy Vary, and widely used on package receipts to defraud the new Czech Post.	\$19.00
2010 PROTECTORATE BOHEMIA & MORAVIA 1939-1945 (Cz) -- POFIS mini catalog, 34 pages, full color, shows all stamps and postal stationery issued, lists plate number positions and labels layout.	\$ 9.00
1963 PADĚLKY ČESKOSLOVENSKÝCH POŠTOVNÍCH ZNÁMEK 1918-1939(Cz), POFIS, Karasek, Kvasnička, Pauliček, 368 pp, b+w, bound. The original, best forgeries monograph on First Republic stamps. Seldom seen for sale.	\$45.00
STAMPS WITH A PORTRAIT OF T.G. MASARYK (E) -- by Henry Hahn, 30 pages, a supplement to the Sept. 1977 Specialist.	\$ 6.00
FORERUNNERS and CONTEMPORARY STAMPS & STATIONERY OF 1918-1919 CZECHOSLOVAKIA (Cz) by Pavel Hirš. Specialized catalog, hard-bound, 140 pgs. Post offices listed in Slovak/Hungarian for Slovakia and Czech/German for Bohemia/Moravia/Silesia. In color.	\$26.00
SPECIALIZED CATALOG OF 1944-1945 CARPATHO-UKRAINE(Cz) by Jiří Majer. Hard bound, 160 pages, in color, with values listed based on actual market prices.	\$26.00
POST WW II POSTAL CANCELLATIONS 1945-1946 (Cz)by Václav Blaha. Soft-bound, 124 pgs. Postal cancel illustrations in b+w, covers in color. Must have for Revolutionary Overprints collectors.	\$19.00
DVD containing copies of the SPECIALIST for years 2000 - 2004 like the DVD listed below that covers 1939-1999. The two prices are for members/ non-members as outlined below. Out of USA add \$1 for postage.	\$ 5.00
CD containing REVOLUTIONARY AND LIBERATION OVERPRINTS & LOCAL ISSUES OF 1944-45 CZECHOSLOVAKIA(Cz) – by Karel Holoubek	\$20.00
	\$27.00

THE CZECHOSLOVAK SPECIALIST

A catalog and monograph on CD. First price is postpaid for members, second one is postpaid for non-members. All foreign orders please add \$3.00 for additional postage. [Reviewed Mar/Apr 08]		
DVD containing 20 th CENTURY ISSUES of the SPECIALIST (1939-1999) along with INDEX for them (E). First price is for members in USA, outside of USA members must add \$1 for postage to this price. Second price is for USA non-members, outside USA non-members add \$1 for postage.		\$10.00 \$20.00
OBLOUKOVÉ TYPY (Arch Types), 25h HRADČANY, V. KRESBA (5th Design)(Cz) by L. Olšina – POFIS. 25 pages, in depth, well illustrated study. [See Jan/Feb '07 issue, pg 21]		\$ 6.00
COMPLETE 20 th CENTURY SUBJECT INDEX, 1939-1999 (E) – Index of articles published in the SPECIALIST over 61 years.		\$ 9.00
GLOSSARY OF PHILATELIC TERMINOLOGY – Third Edition (Cz,E) – Translate Czech terms into English and back; 130 pgs. (Reviewed: Mar/Apr 97)		\$20.00
MAIL OF THE CZECHOSLOVAK LEGIONS IN FRANCE (Cz,E) -- by Jaroslav J. Verner. This 80 page, English/Czech publication is the first on this subject and is being published by the Society. It includes political/historic context, development of units and their postal arrangements, illustrations of cancels, point valuation system, and B/W and color illustrations. (Reviewed: Jan/Feb 03)		\$12.00
THE PHILATELY OF CZECHOSLOVAKIA FOR BEGINNERS by Phil Freer (E)		\$10.00
MANUAL FOR HRADČANY COLLECTORS – VOL. 3, by Hamr and Škaloud(Cz) -- Follow on to previous two volumes. (Reviewed Nov/Dec 06)		\$18.50
CZECH POST POSTAL CARD commemorating the 60 th Anniversary of the Society – May 31, 1999 (see Jul/Aug 99, p1-3; Sep/Oct 99, p38)		\$ 1.50
MONOGRAFIE Series (Cz):		
MONOGRAFIE 16, Part II (Šafov - Žumberk, Slovakia, Carpatho-Ukraine, railroad cancels] – catalog of 1918-1920 period postmarks		\$22.50
MONOGRAFIE 20, PART (2)(Cz) – by Jiří Kratochvíl. Compilation of the historical development and designation of post office and postal contract station names from the oldest times through 2009. It has a translation list of German and Polish post office names into their Czech equivalent. Also the dates of every post office and station opening and closing. 368 pages.		\$35.00
[NEW] MONOGRAFIE 25, Vol. I (Cz) – 90 years of the Czech Postal Museum (Cz)		\$35.00
[NEW] MONOGRAFIE 25, Vol. II (Cz) – Postal worker uniforms, 13 th century to date. 192 pages, half in color. Includes a blue print.		\$35.00
Publications of the Czechoslovak Philatelic Society of Great Britain(E):		
Monograph 3 – THE POŠTA ČESKOSLOVENKSO OVERPRINTS -- Roy Dehn, 55 pages. A detailed and well-illustrated study of the 1919 overprints (1985, reprinted 2015)		\$22.00
Monograph 4 – CARPATHO-UKRAINE – POSTAL MARKINGS of the YEARS 1938-45, by Juan Page		\$16.00
Monograph 5 –CZECHOSLOVAK ARMY IN FRANCE (WWII), by Reader		\$17.50
Monograph 6 – GERMAN OCCUPATION OF SUDETENLAND 1938, by Dawson		\$26.00
Monograph 7 – INDEX OF ARTICLES ON CZECHOSLOVAK PHILATELY 1950-1979, by Negus		\$ 4.50
Monograph 8 – OCCUPATION OF CZECH FRONTIER TERRITORIES BY BECK'S POLAND from the POSTAL HISTORY VIEW-POINT, by Neumann		\$20.00
Monograph 9 – FIELD POST OF CZECHOSLOVAK & ALLIED FORCES IN RUSSIA1918-20, by W.A. Page		\$22.00
Monograph 10 – 25 th ANNIVERSARY OF CZECHOSLOVAK INDEPENDENCE (The 1943 London Exhibitions), by Kralicek and W.A. Page		\$17.50

Monograph 11 -- THE SOKOLS IN PHILATELY -- COMMEMORATIVE POSTMARKS AND POSTCARDS, by Day	\$25.00
Monograph 12 -- MILITARY CARDS OF THE EXILED CZECHOSLOVAK FORCES IN FRANCE AND BRITAIN, by Kralicek and W.A. Page	\$14.50
Monograph 13 -- THE HRADČANY ISSUE 1918-20, by Bradford	\$16.00
Monograph 14 -- THE LIBERATION OF OLOMOUC, MAY 1945, by Robert J. Hill	\$18.00
Monograph 15 -- POSTAL HISTORY OF THE FREE CZECHOSLOVAK FORCES IN GREAT BRITAIN: 1940-1945, by R. Beith	\$22.00
Monograph 16 -- THE CZECHOSLOVAK LEGION IN POLAND AND RUSSIA and CZECHOSLOVAKS IN THE MIDDLE EAST 1940-1943, by Dr. Vratislav Palkoska and Otto Hornung RDP.	\$24.00
Monograph 17 -- CZECHOSLOVAK FIELD POST 1918-21, by Brian Day	\$27.00
Monograph 18 -- POSTAL ARRANGEMENTS FOLLOWING THE LIBERATION OF PRAGUE IN MAY 1945, by Robert J. Hill	\$32.00
Monograph 19 -- BOHEMIA & MORAVIA by John Hammonds, Rex Dixon. 81 pages, some in color. All postal rates for the era, all German Military mail. Best Protectorate Monograph to date. [Reviewed: Winter 2010]	\$26.00
Monograph 20 -- THE EARLY POSTAL HISTORY OF CARPATHO- UKRAINE by Otto Hornung. All color, 34 pgs, with particular reference to the usage of the first postage stamps of Austria.	\$35.00
Monograph 22 -- POSTMARKS OF THE SO 1920 PLEBISCITE by Oldřich Tovačovský <i>et al.</i> All color, 66 pages, four articles on various aspects of the postmarks used by Czechoslovakia in 1920 in the plebiscite area of Eastern Silesia together with the smaller areas of Orava and Spiš.	\$30.00
Monograph 23 -- THE 1923 AGRICULTURE AND SCIENCE ISSUE by Mark Wilson. 29 A4 pages soft bound, 80 b/w illustrations; in this book he combines several articles with further research; all of the stamp types and subtypes are illustrated and described.	\$20.00
[NEW] Monograph 24 -- TRAVELLING POST OFFICES IN GERMAN-OCCUPIED SUDETENLAND by Tony Goodbody and Cyril Kidd. 30 A4 pages soft bound, 55 b/w illustrations; referenced are all of the cancellations of the railroad post offices (RPO) in the Sudetenland; the initial temporary and later permanent cancels are shown.	\$20.00
[NEW] Monograph 25 -- COMPENDIUM OF 1944-1945 LIBERATION OVERPRINTS by Karel Holoubek, trans. by Robert J. Hill. 322 pgs, b/w, but also CD of the book in color. Shows overprints of towns that were about to be liberated along with extensive historical data about them. [Reviewed: Fall 2012]	\$50.00
[NEW] Monograph 26 -- FREE CZECHOSLOVAK FORCES IN FRANCE 1939-1940 by Richard Beith. 72 pages, full color, a historical and philatelic study.	\$28.00
[NEW] Monograph 27 -- THE CZECHOSLOVAK INDEPENDENT ARMOURED BRIGADE IN FRANCE AND THEIR RETURN HOME, 1944-1945 by Richard Beith. 54 pages, full color, a historical and philatelic study intended as a companion to Monograph No. 26 by the same author.	\$25.00
[NEW] Monograph 28 -- RAILWAY MAIL IN SLOVAKIA AND RUTHENIA by Dr. Anthony M. Goodbody, FRPSL. 38 + A4 pages, full color. Provides a detailed and fully illustrated survey of the Traveling Post Offices and Conductor Posts in Slovak and Ruthene territory from their inception in 1867 right up to modern times. The Appendix includes 12 tables giving full lists of TPOs and Conductor Posts arranged by period and lists of all railway terminals and junctions in the area giving both Hungarian and Slovak names. By the same author as Monograph 24.	\$20.00

World Stamp Show



Please check by email to verify books are available before ordering.

Some publications available on postpaid basis in USA.
Non-members - Please add 25% to the price plus full postage.
Foreign orders - Please contact for postage rate!!

Email: wellseats@hotmail.com

"Free SCP Commemorative postal card
with order over \$25.00"

Society for Czechoslovak Philately Inc.

Attention: James Buckner

322 Woodhaven Drive

Athens, GA 30606

COOPERATION AGREEMENT WITH THE CZECHOSLOVAK PHILATELIC SOCIETY OF GREAT BRITAIN

Check out our sister organization, the Czechoslovak Philatelic Society of Great Britain, at their website: www.cpsgb.org.uk, and through their new Membership Secretary, Hans van Dooremalen at cpsgb1@gmail.com.

Their publication *Czechout* and our *Specialist* have little duplication in content. In addition, under a new agreement the two societies have arranged for payment of your CPSGB dues to our SCP Treasurer without having to worry about foreign currency or sending it to the UK. So why not have more fun, become a member of both societies! CPSGB dues are \$10 for digital, \$45 for printed copies by airmail or \$39 for printed copies by surface. Payment can be made via Paypal to sales@csphilately.org or by check to SCP, c/o Tom Cossaboom, PO Box 4124, Prescott, AZ 86302.